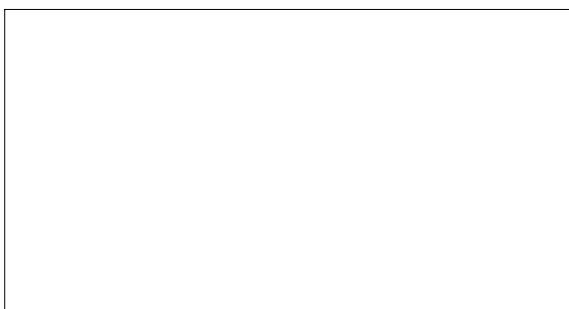
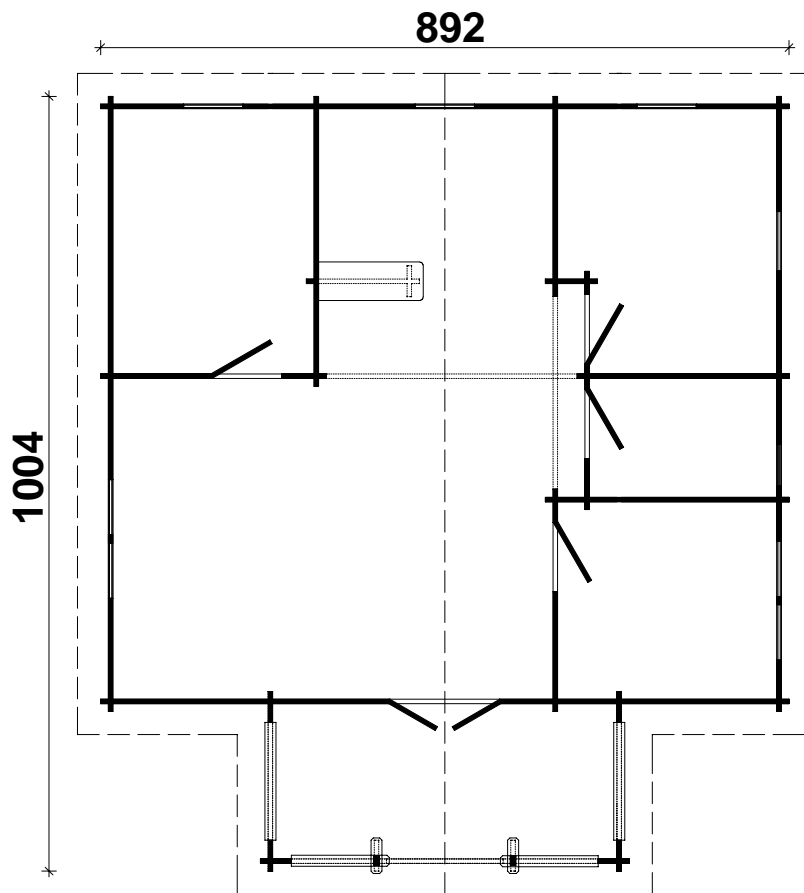


Techn. Data: Rusia 2090

Log length (W x D): 892 x 1004 cm

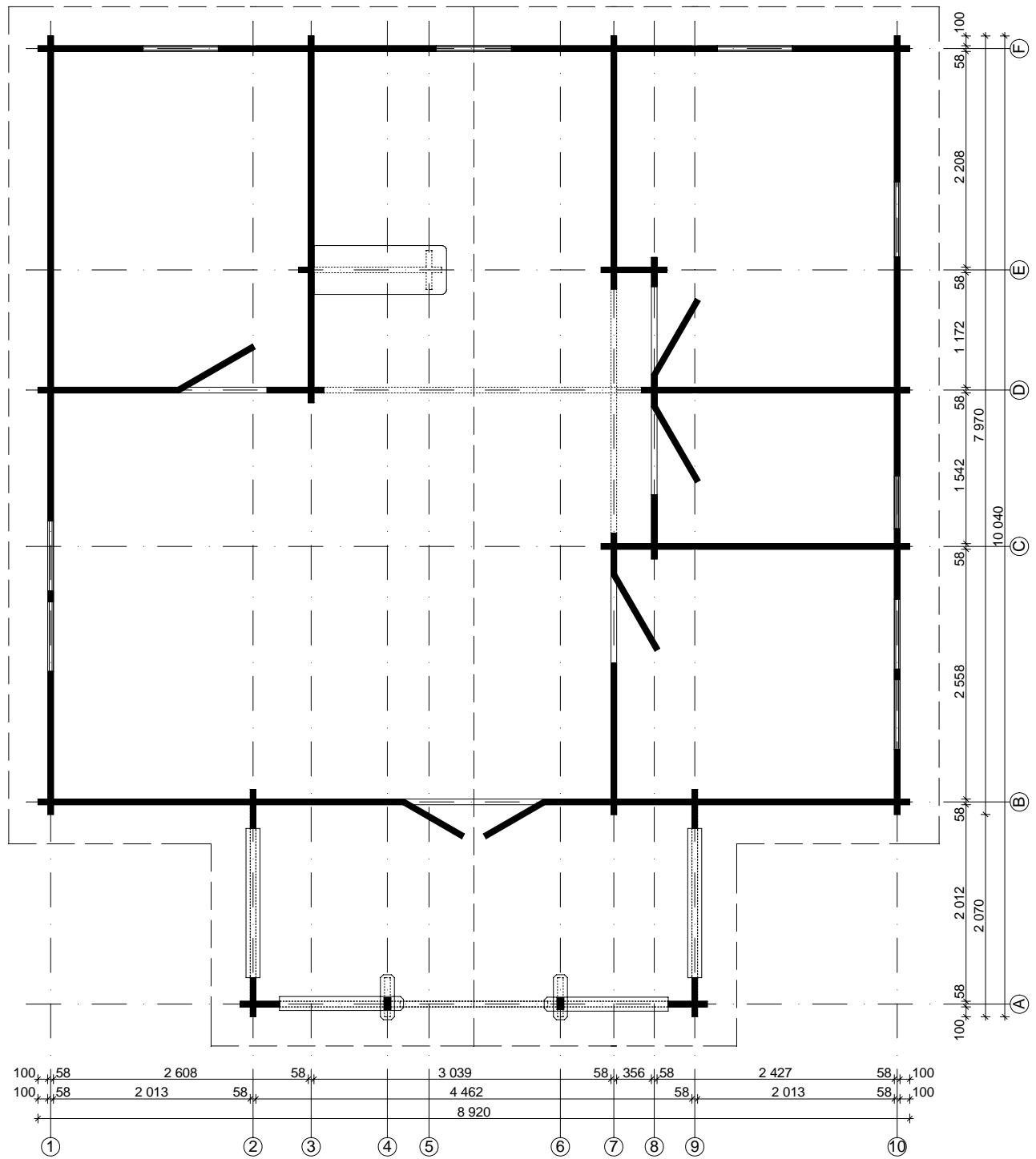
Wall size(outside): 872 x 984 cm · Log thickness: 58 mm



Note: All dimensions are approximate !

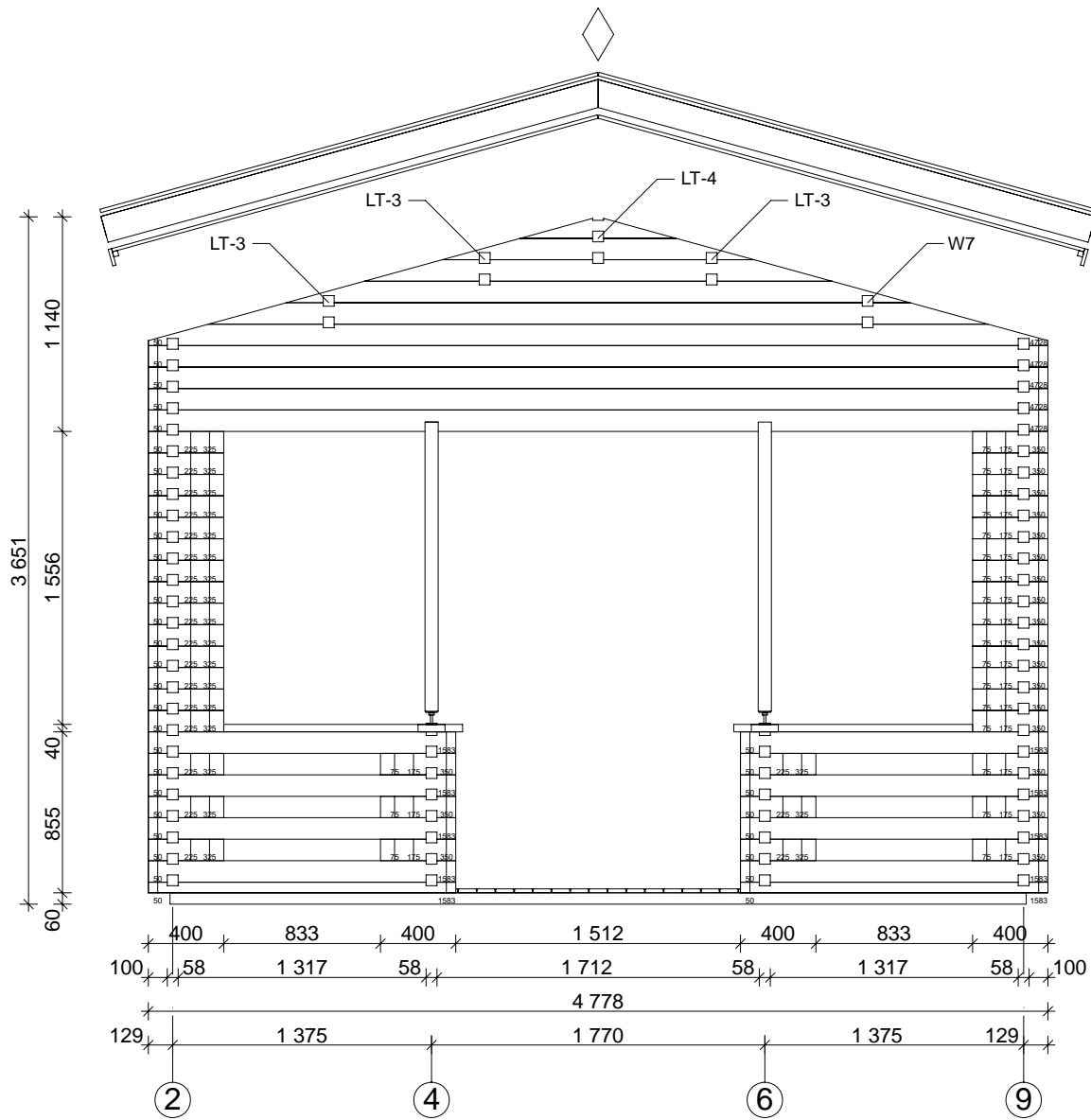
Rusia 58 mm / 892 x 1004 cm - Ground plan

2090



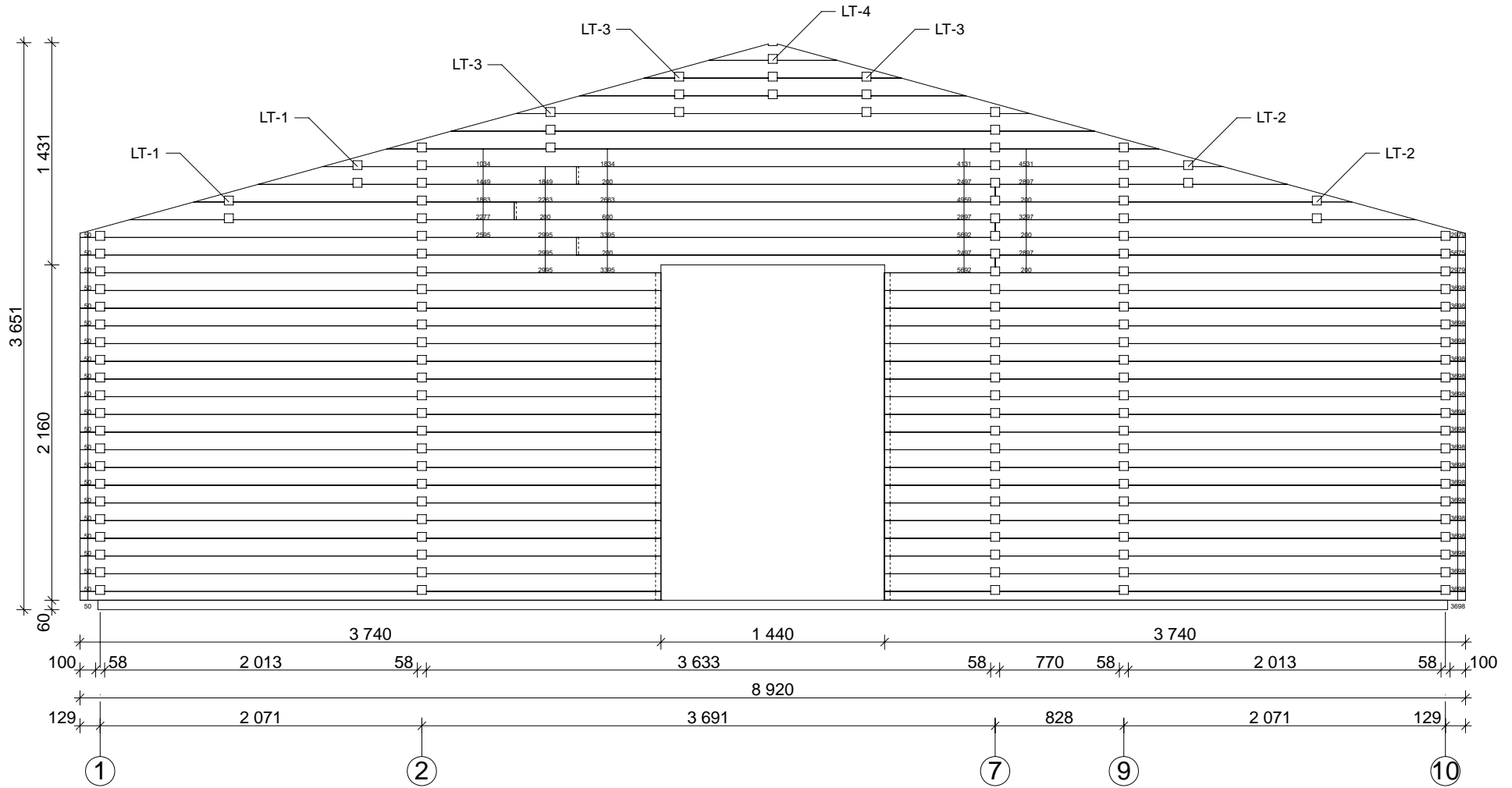
Rusia 58 mm / 892 x 1004 cm - Wall A

2090

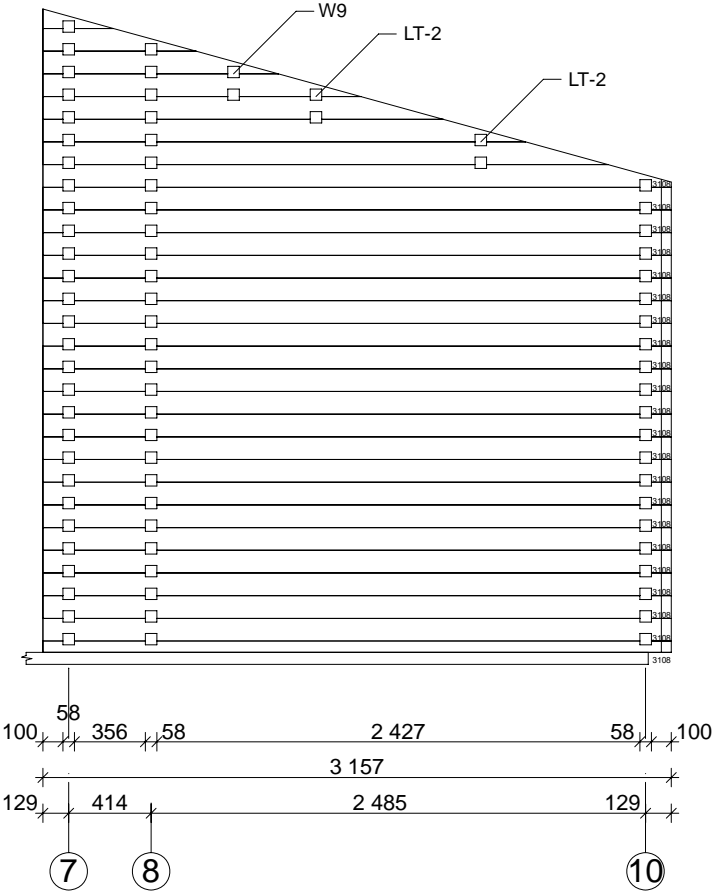


Rusia 58 mm / 892 x 1004 cm - Wall B

2090

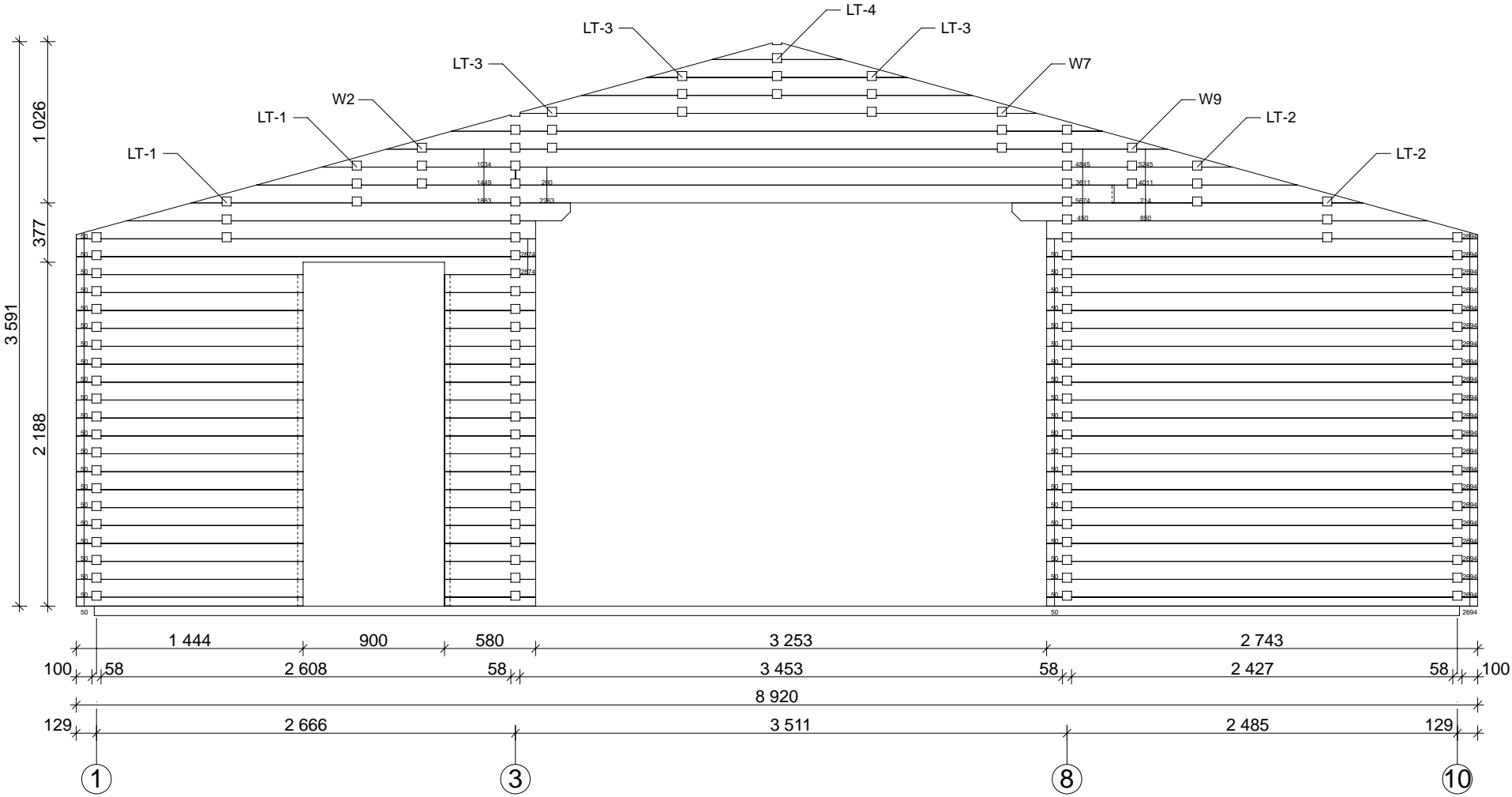


Rusia 58 mm / 892 x 1004 cm - Wall C



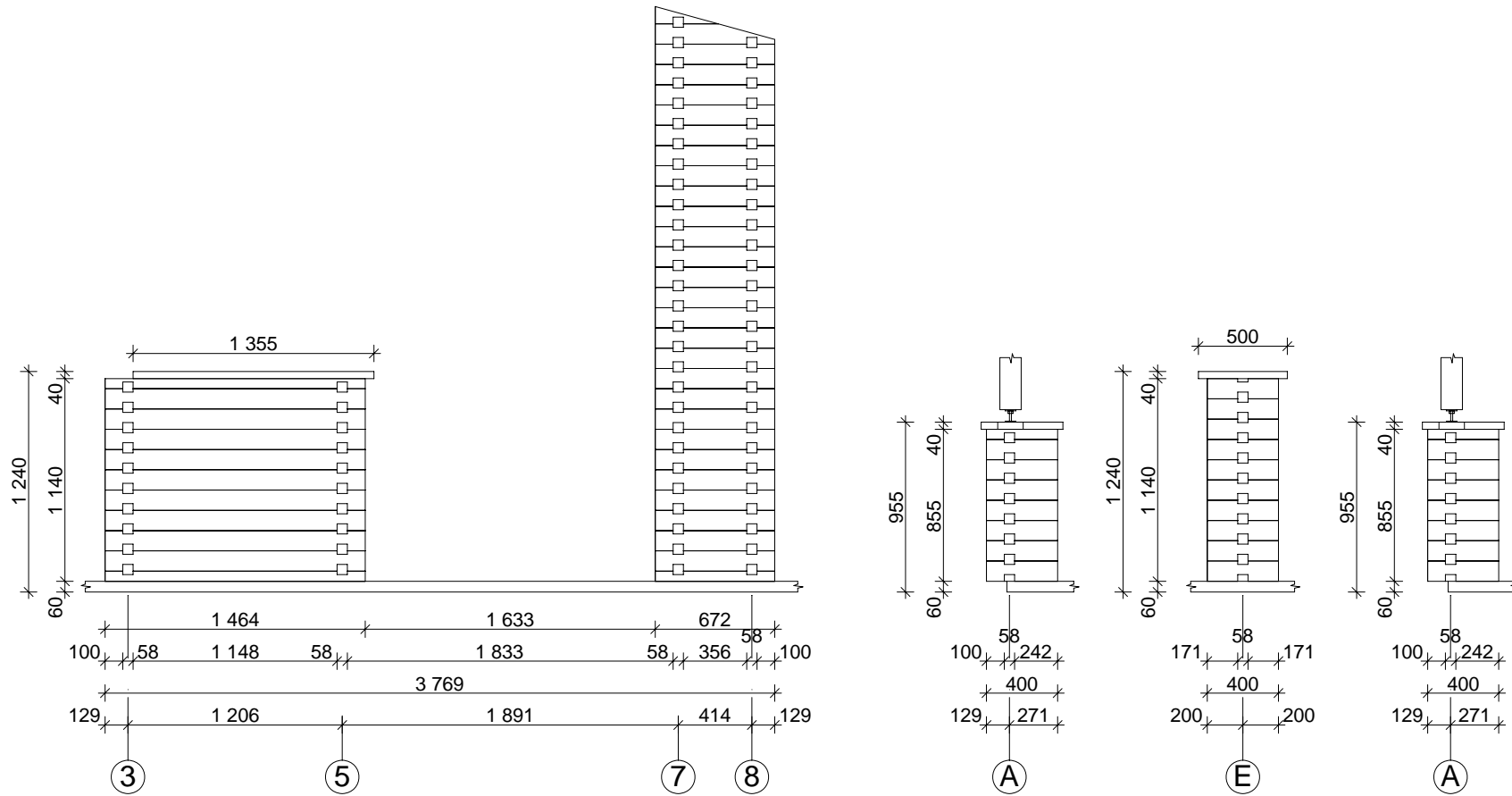
Rusia 58 mm / 892 x 1004 cm - Wall D

2090



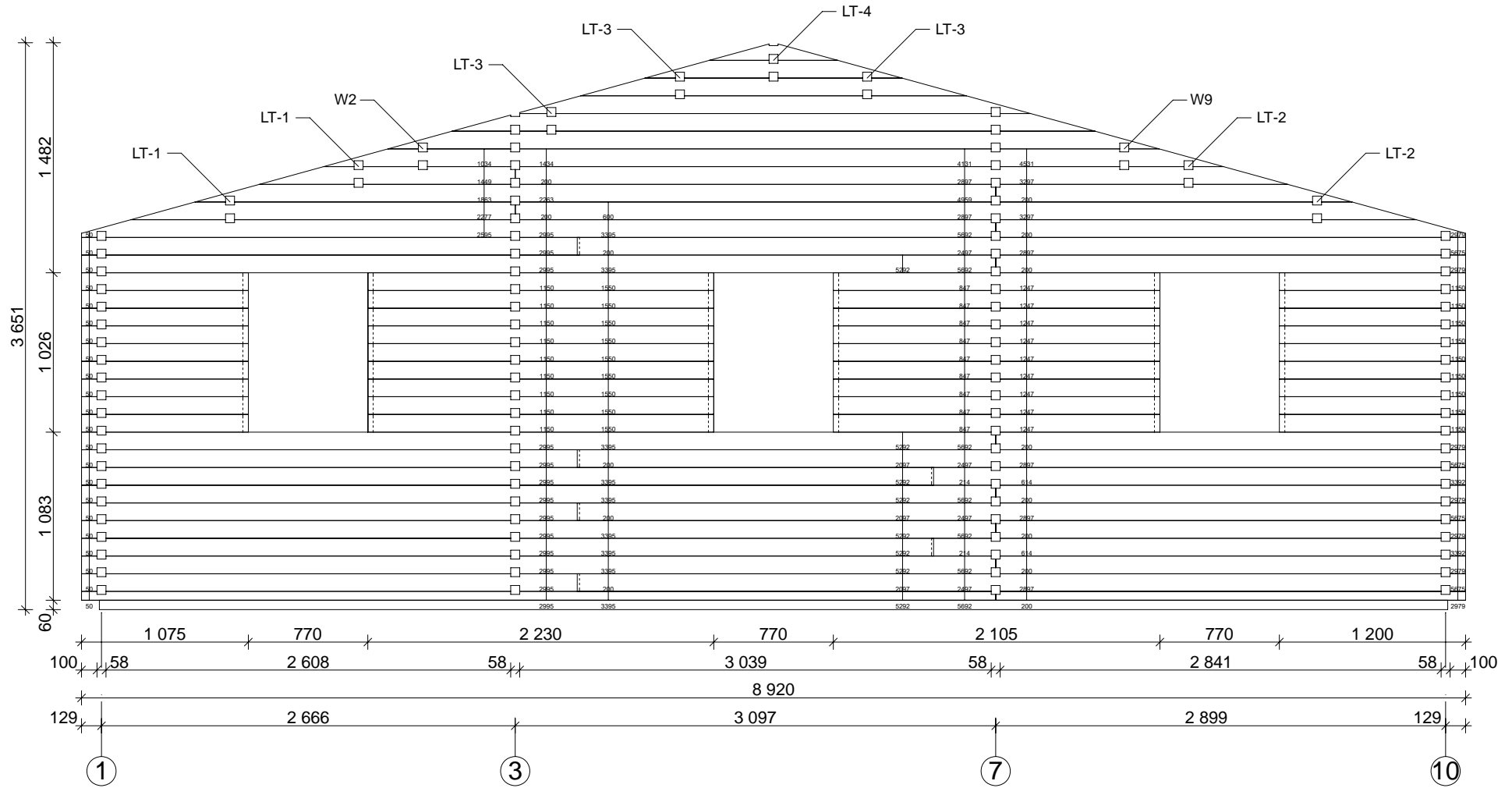
Rusia 58 mm / 892 x 1004 cm - Wall E, Wall 4, Wall 5, Wall 6

2090



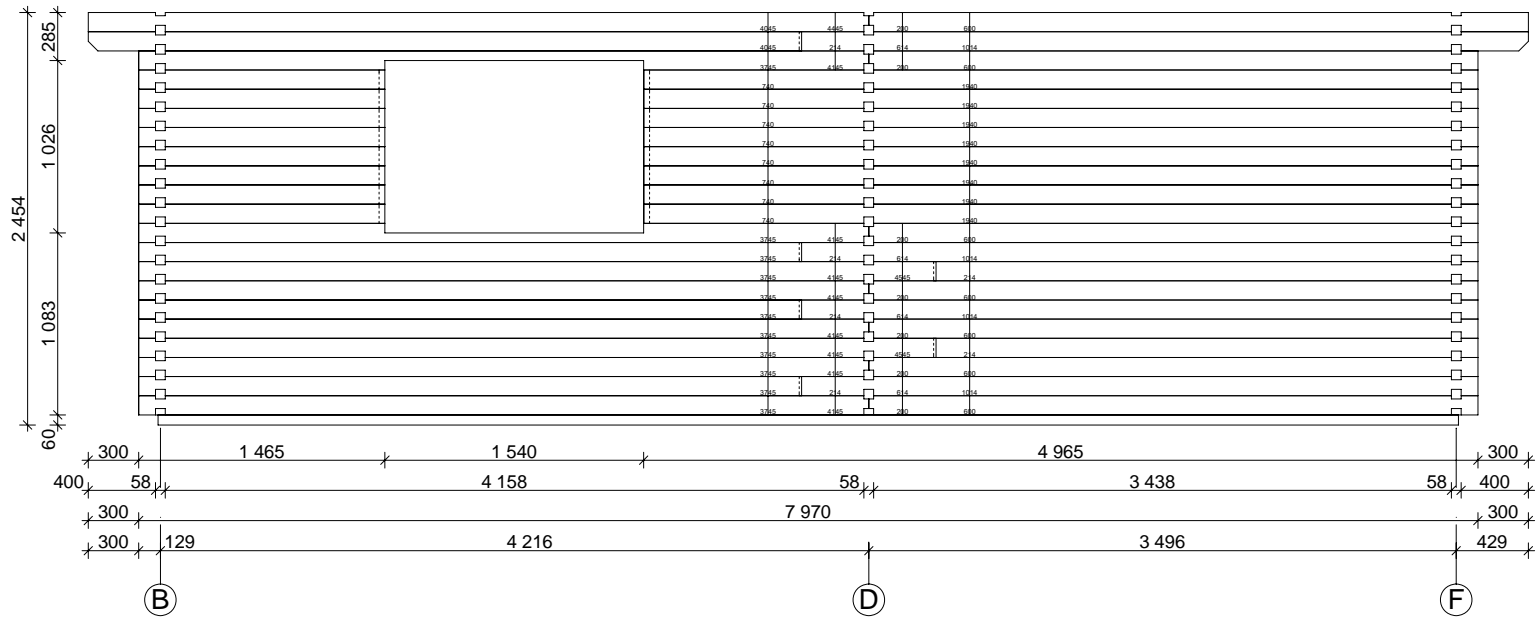
Rusia 58 mm / 892 x 1004 cm - Wall F

2090



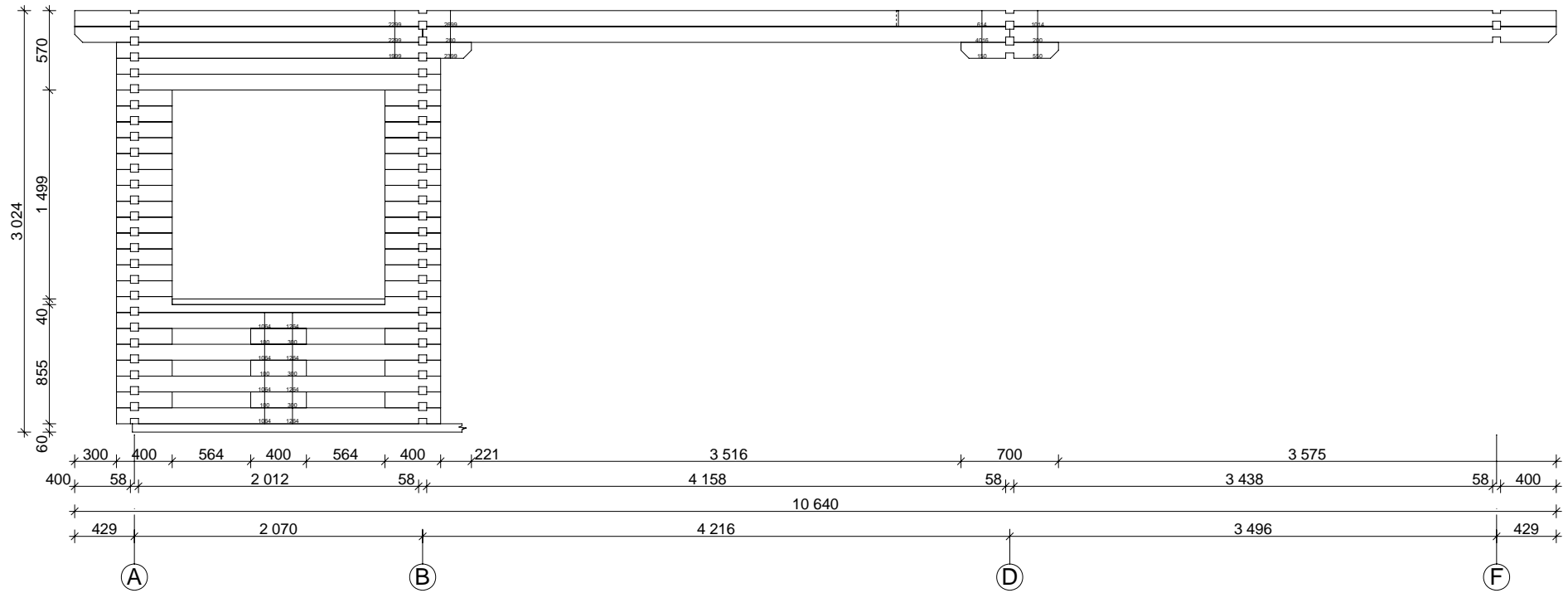
Rusia 58 mm / 892 x 1004 cm - Wall 1

2090

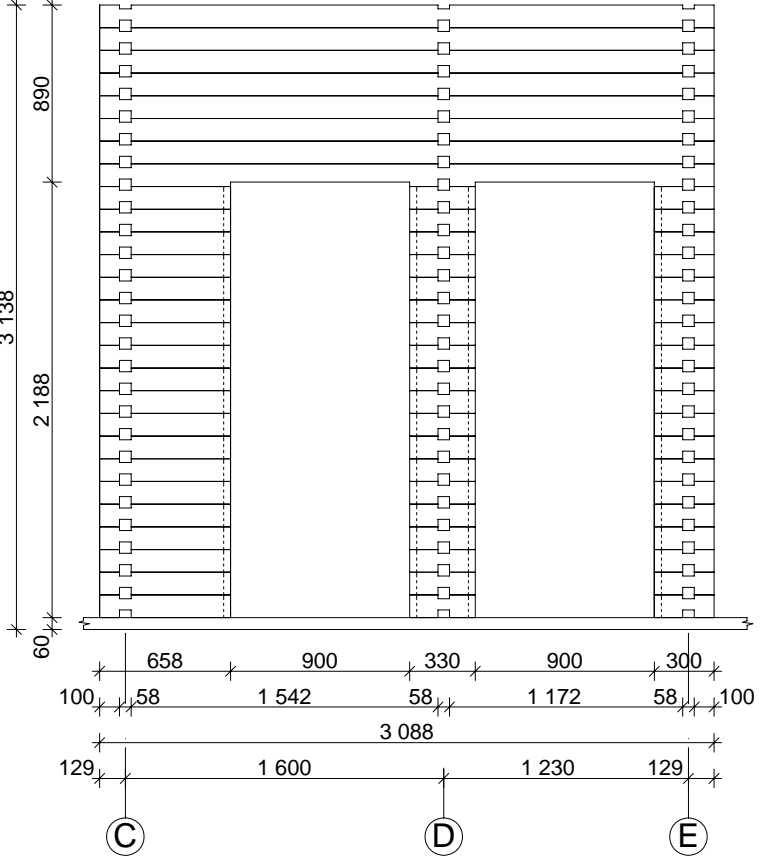
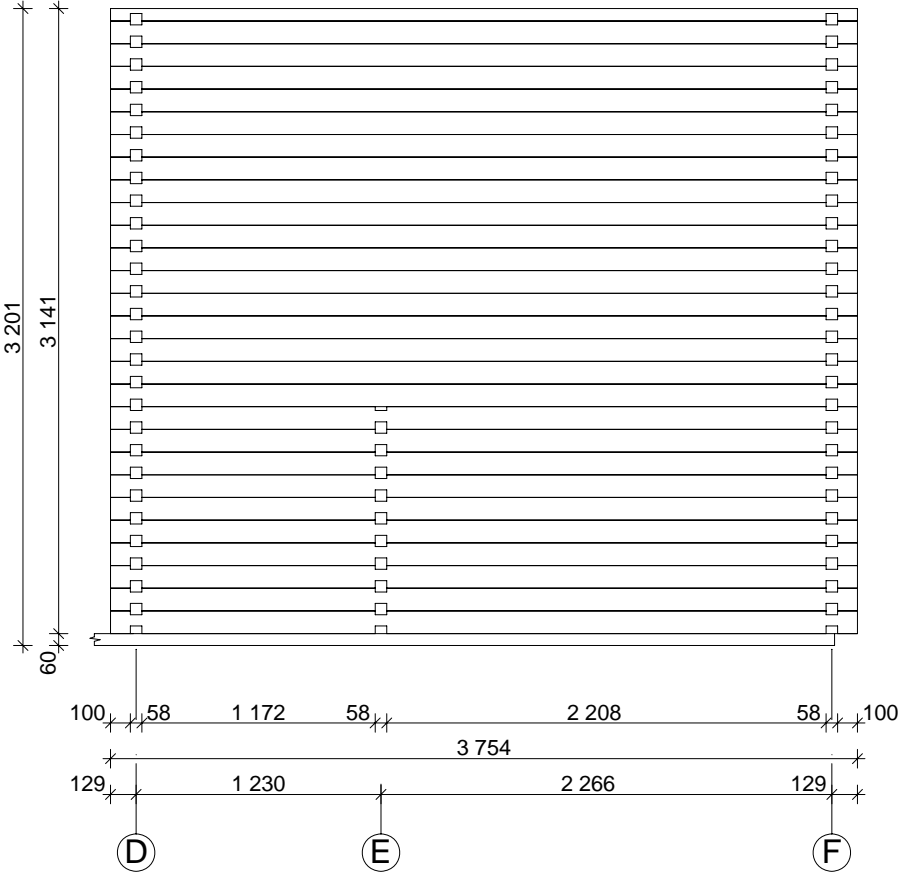


Rusia 58 mm / 892 x 1004 cm - Wall 2

2090

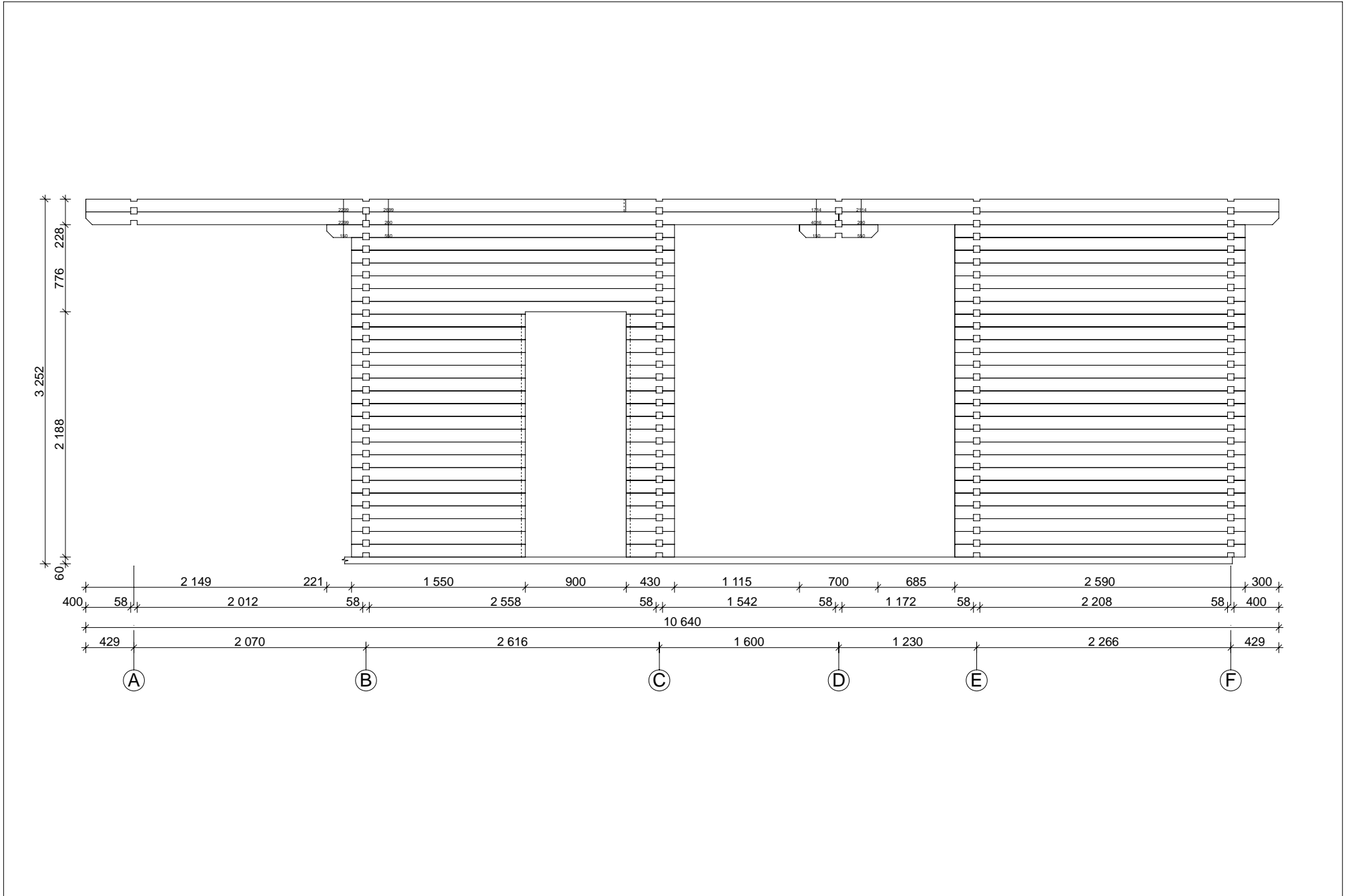


Rusia 58 mm / 892 x 1004 cm - Wall 3, Wall 8



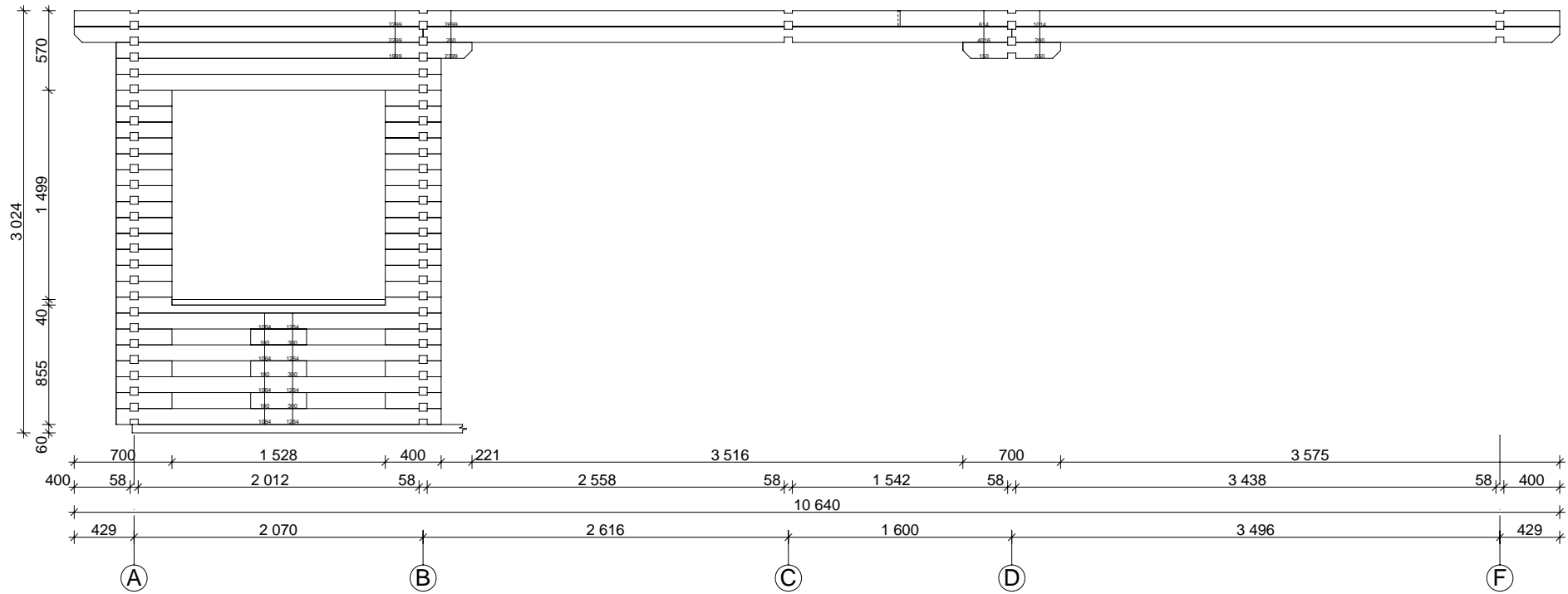
Rusia 58 mm / 892 x 1004 cm - Wall 7

2090

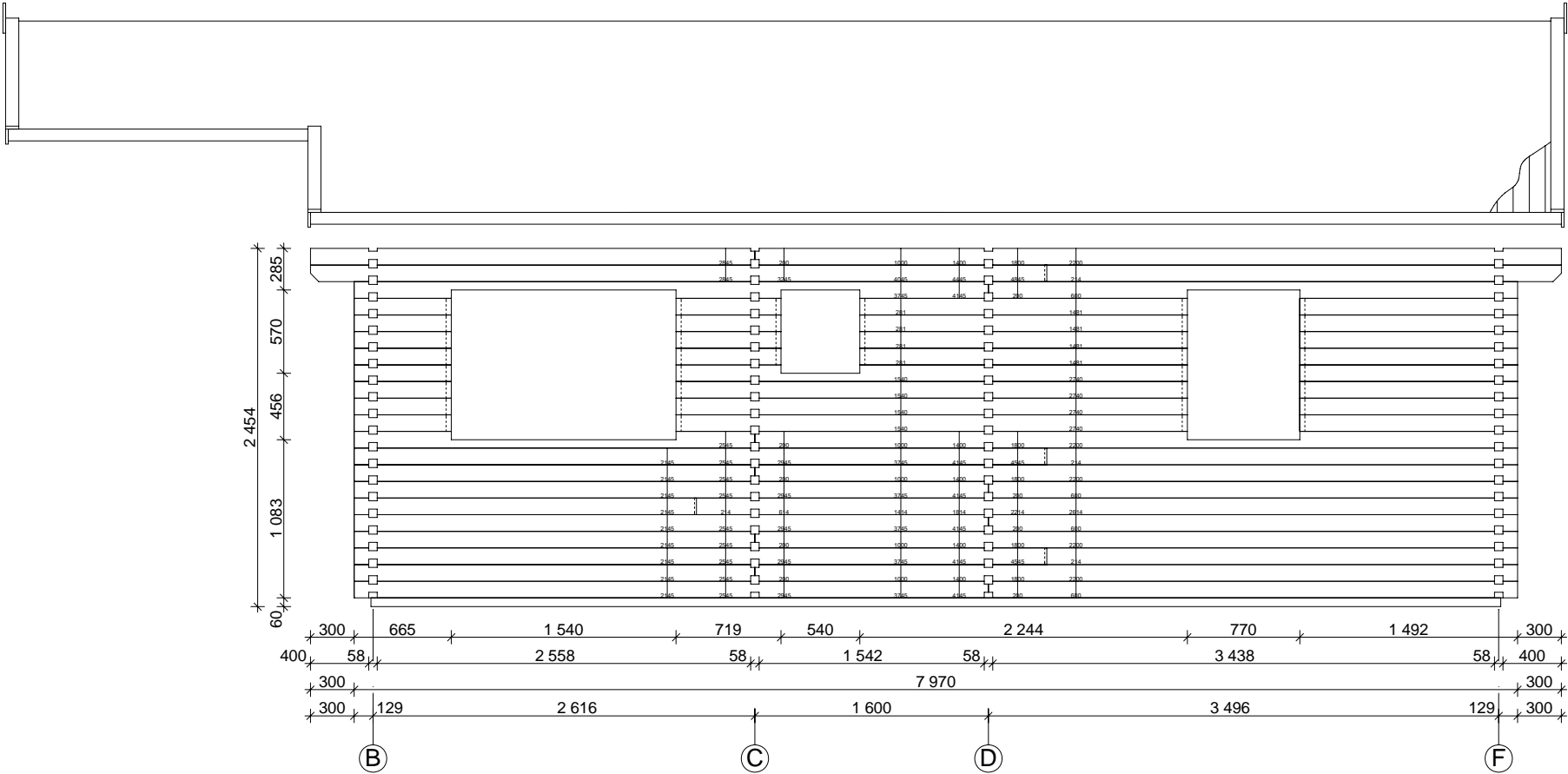


Rusia 58 mm / 892 x 1004 cm - Wall 9

2090



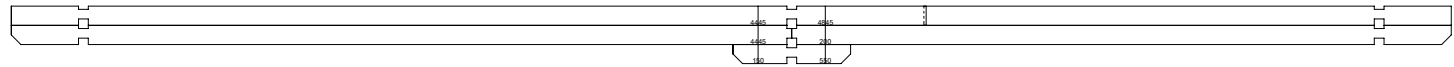
Rusia 58 mm / 892 x 1004 cm - Wall 10



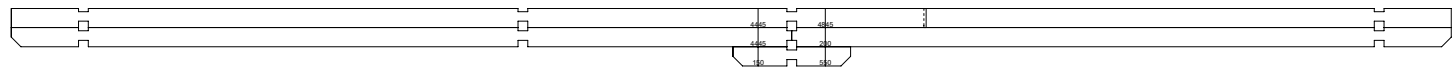
Rusia 58 mm / 892 x 1004 cm - Roof beams

2090

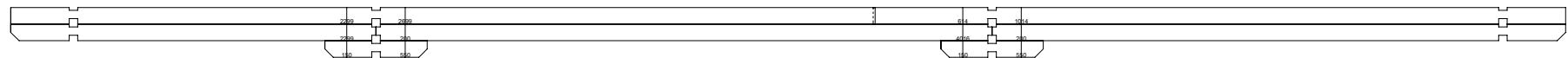
LT-1



LT-2



LT-3



LT-4

