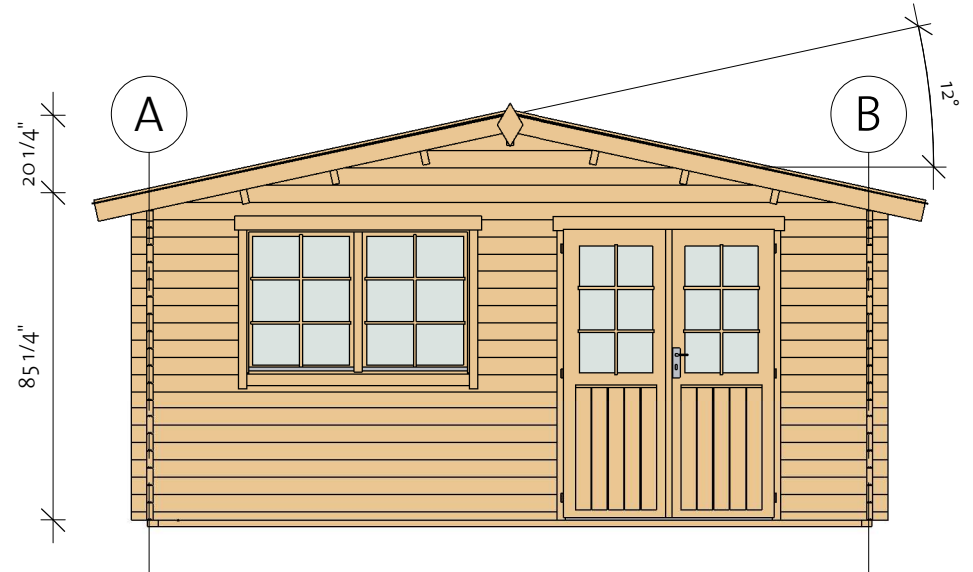
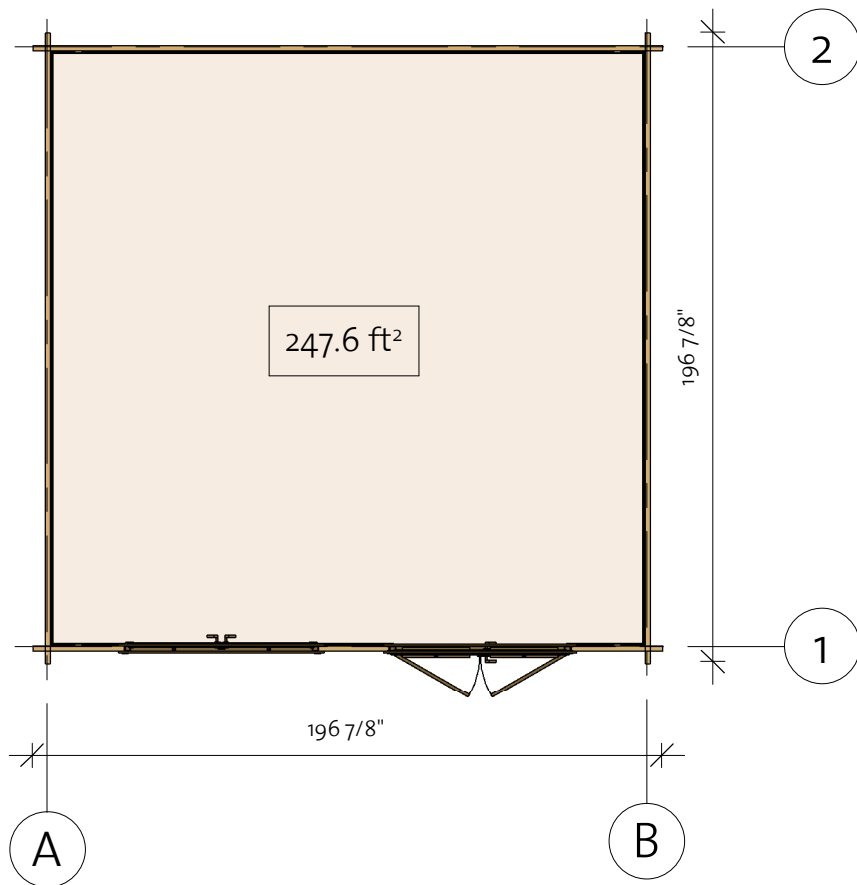
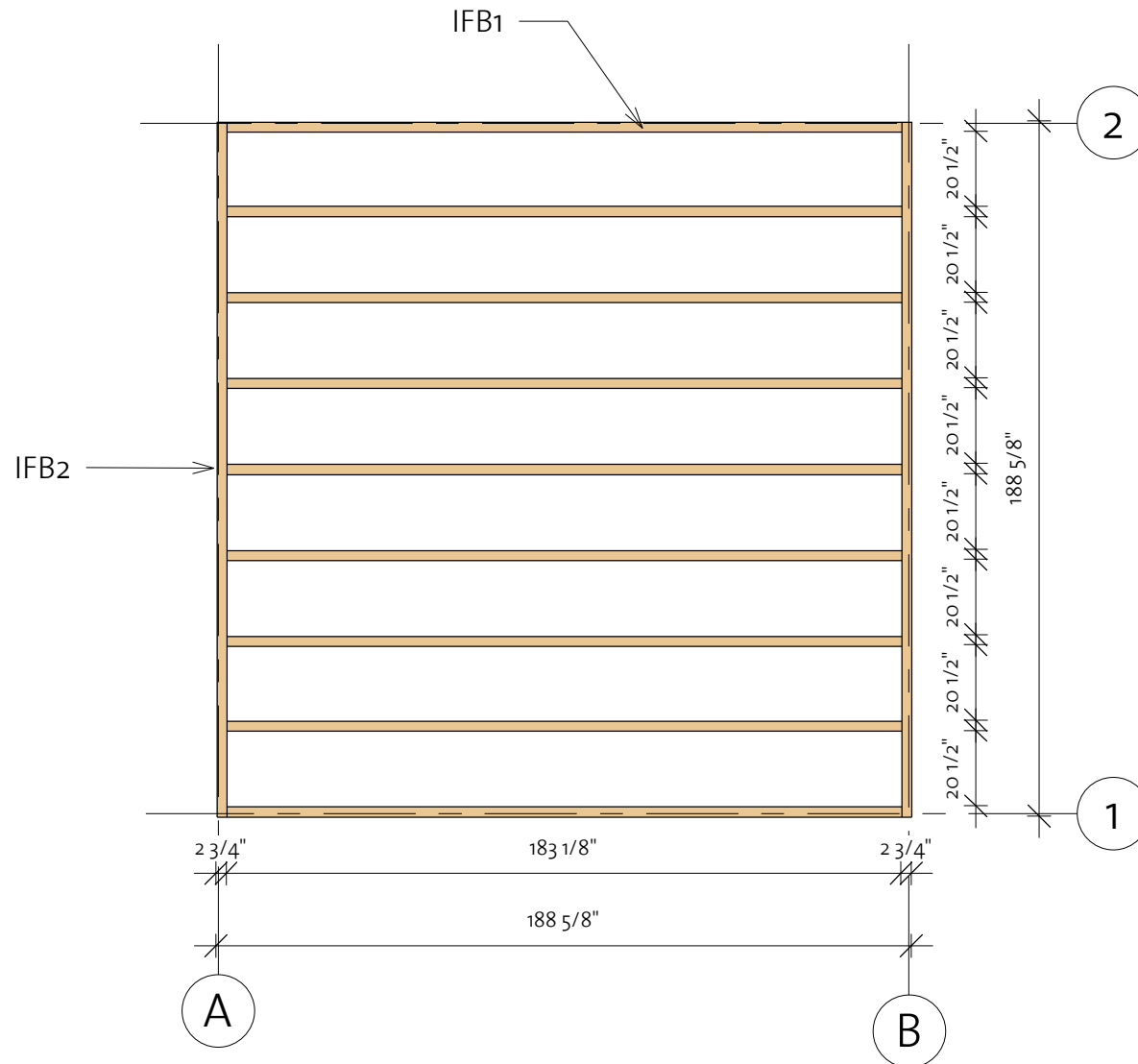




Brunswick 40 (189" x 189")



Brunswick 40 (189"x189")

Foundation

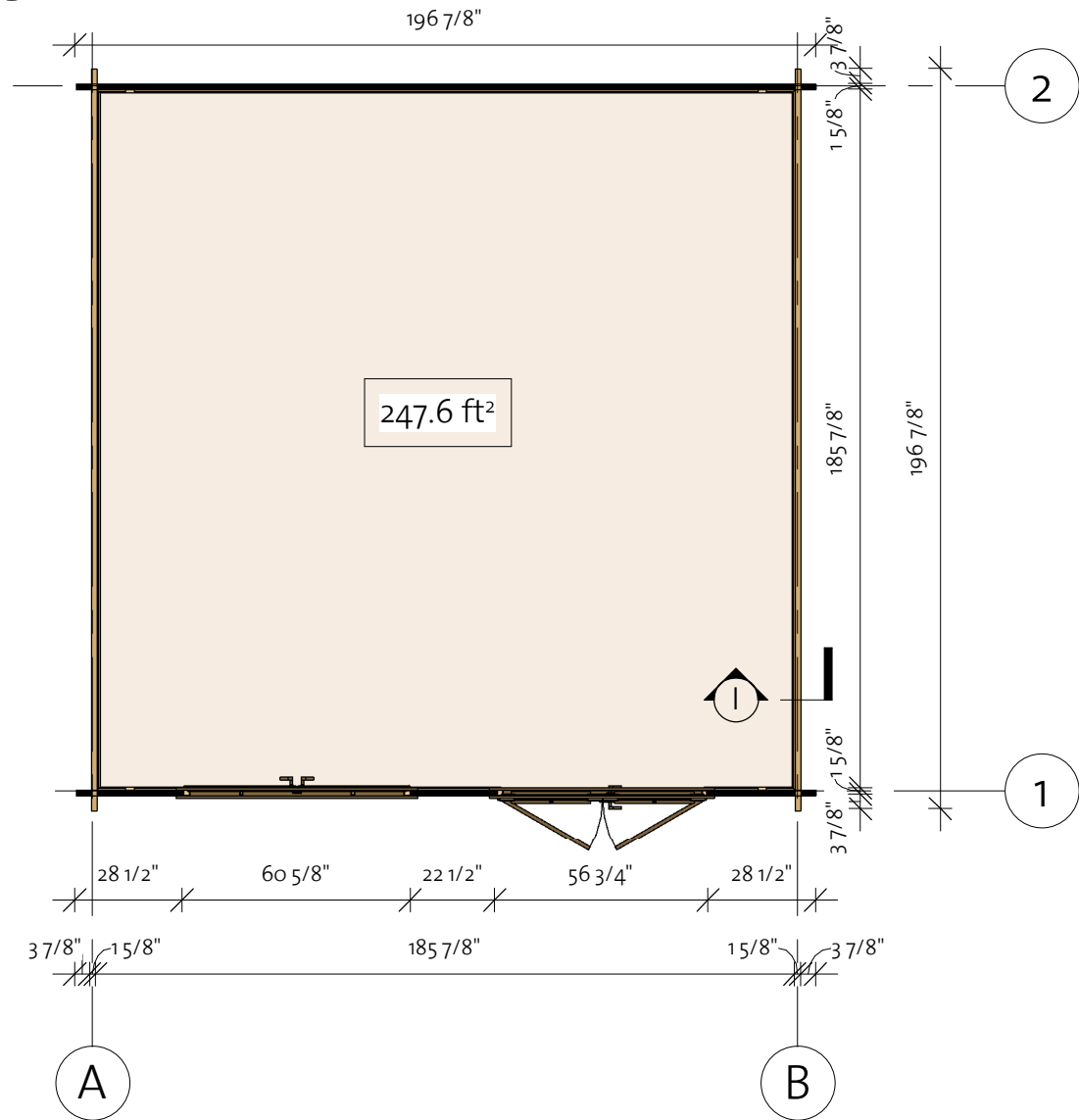
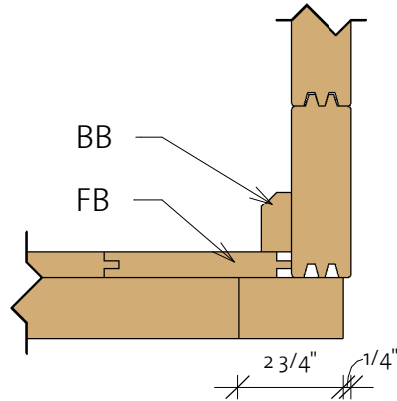


Impregnated foundation beams				
Mark	Type	Profile	Count	Length
IFB1	IFB 70x40		9	183 1/8"
IFB2	IFB 70x40		2	188 5/8"

Brunswick 40 (189"x189")


Floor Plan


① Baseboard



Floor Schedule

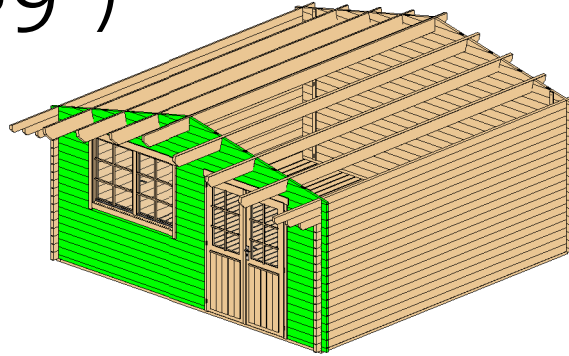
Mark	Type	Profile	Count	Length
------	------	---------	-------	--------

FB	FB 17x114		43	185 5/8"
----	-----------	---	----	----------

BB	BB 20X40		4	189"
----	----------	---	---	------

Brunswick 40 (189"x189")

Wall 1


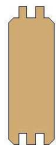


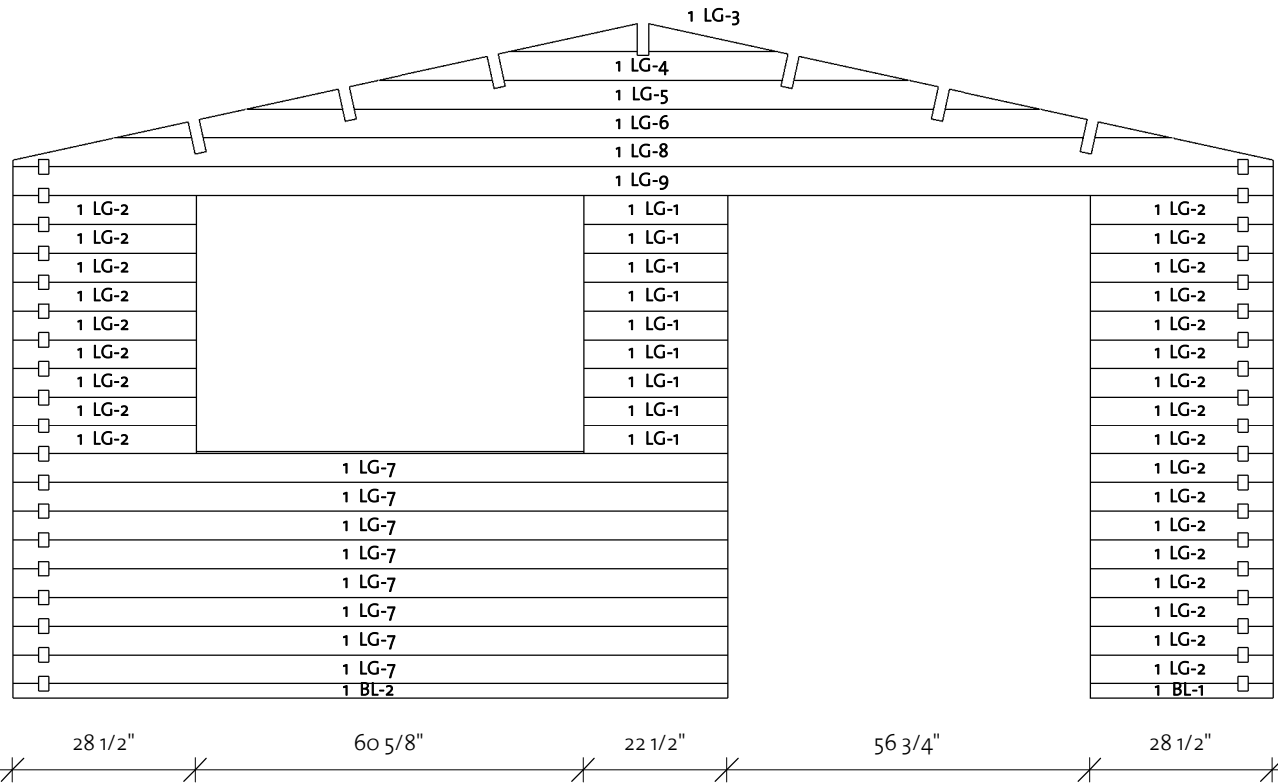
Wall 1			
Mark	Profile	Count	Cut Length

1BL-1	40X57	1	28 1/2"
1BL-2	40X57	1	111 5/8"
1LG-1	40X114	9	22 1/2"
1LG-2	40X114	26	28 1/2"
1LG-3*	40X114	1	41 3/8"
1LG-4*	40X114	1	82 5/8"
1LG-5*	40X114	1	123 7/8"
1LG-6*	40X114	1	165 1/4"
1LG-7	40X114	8	111 5/8"
1LG-8*	40X114	1	196 7/8"
1LG-9	40X114	1	196 7/8"

* Gable - delivered premounted

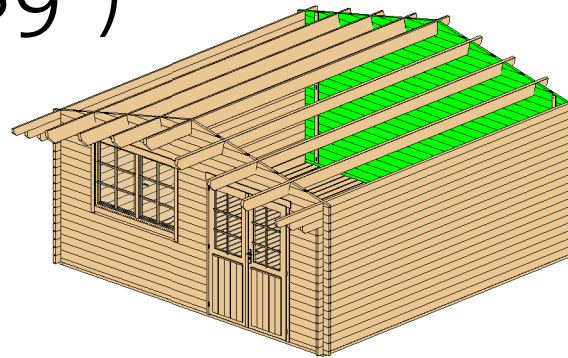
Log Profile Wall 1	
Profile	Profile

40X57	
40X114	



Brunswick 40 (189"x189")

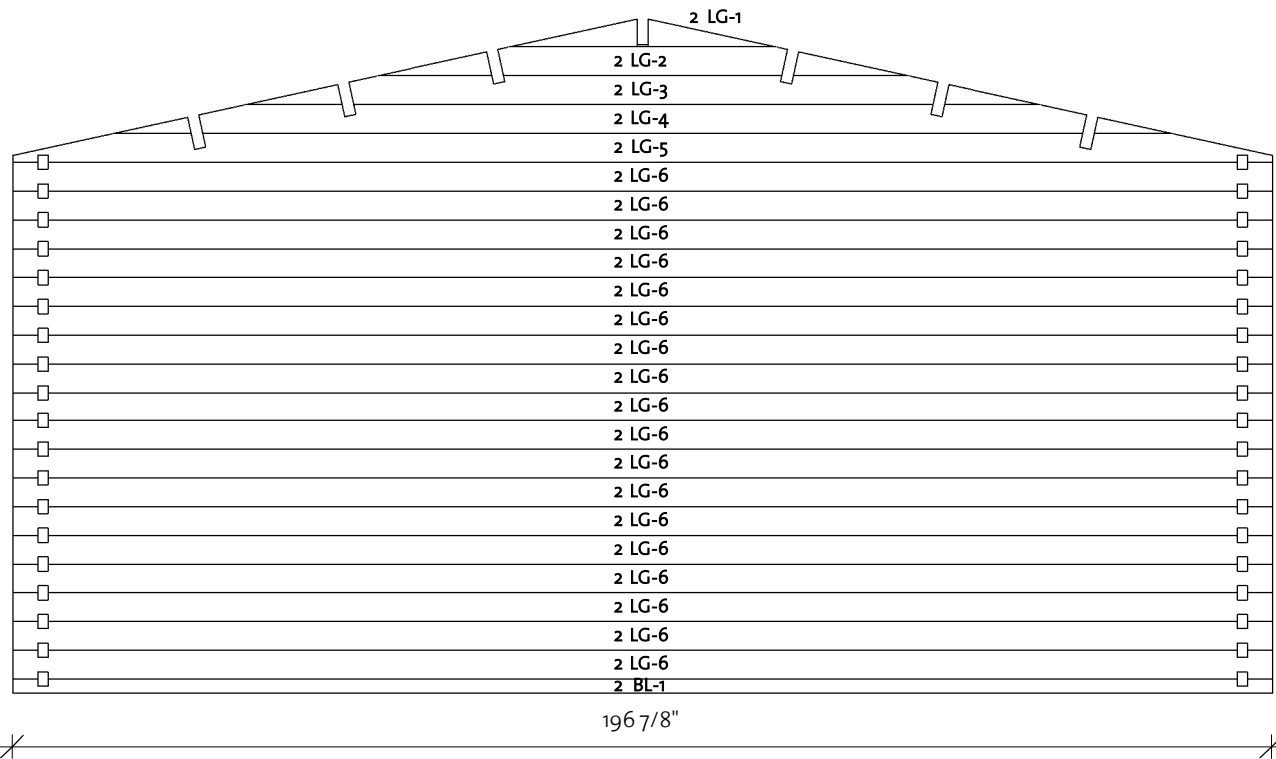
Wall 2



Wall 2			
Mark	Profile	Count	Cut Length

2BL-1	40X57	1	196 7/8"
2LG-1 *	40X114	1	41 3/8"
2LG-2 *	40X114	1	82 5/8"
2LG-3 *	40X114	1	123 7/8"
2LG-4 *	40X114	1	165 1/4"
2LG-5 *	40X114	1	196 7/8"
2LG-6	40X114	18	196 7/8"

* Gable - delivered premounted

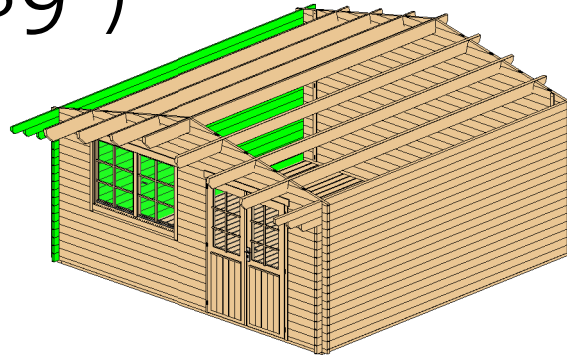


Log Profile Wall 2	
Profile	Profile

40X57	
40X114	

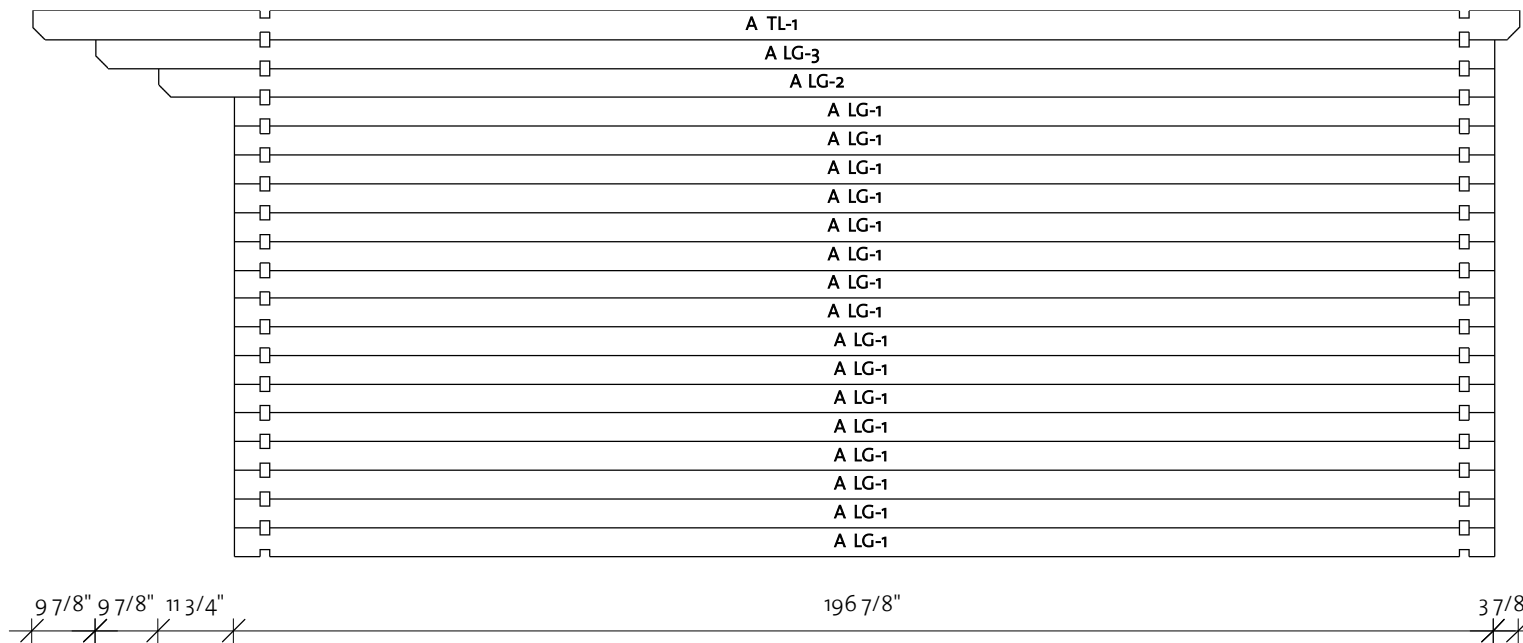
Brunswick 40 (189"x189")

Wall A



Wall A			
Mark	Profile	Count	Cut Length

ALG-1	40X114	16	196 7/8"
ALG-2	40X114	1	208 5/8"
ALG-3	40X114	1	218 1/2"
ATL-1	40X114	1	232 1/4"

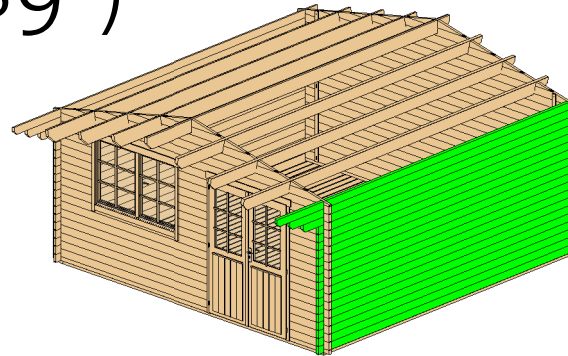


Log Profile Wall A	
Profile	Profile

40X114	
40X114	

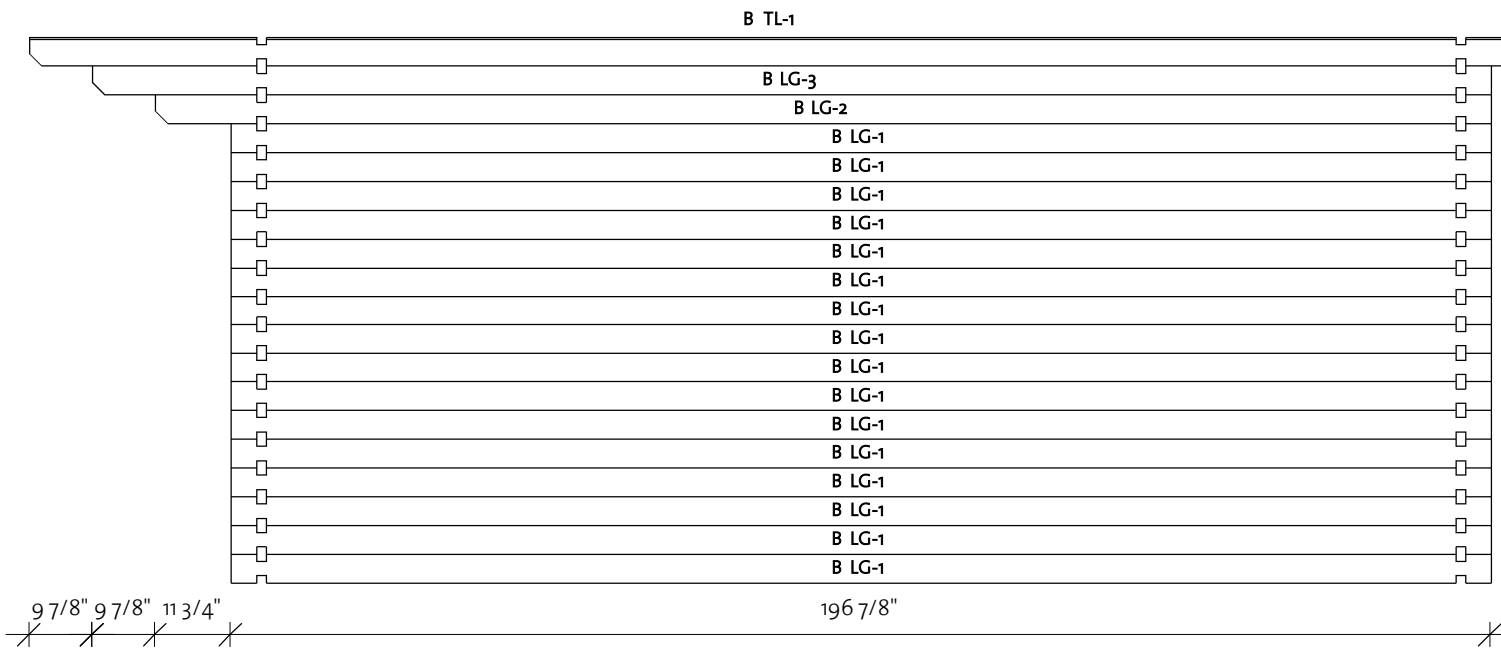
Brunswick 40 (189"x189")

Wall B



Wall B			
Mark	Profile	Count	Cut Length

BLG-1	40X114	16	196 7/8"
BLG-2	40X114	1	208 5/8"
BLG-3	40X114	1	218 1/2"
BTL-1	40X114	1	232 1/4"

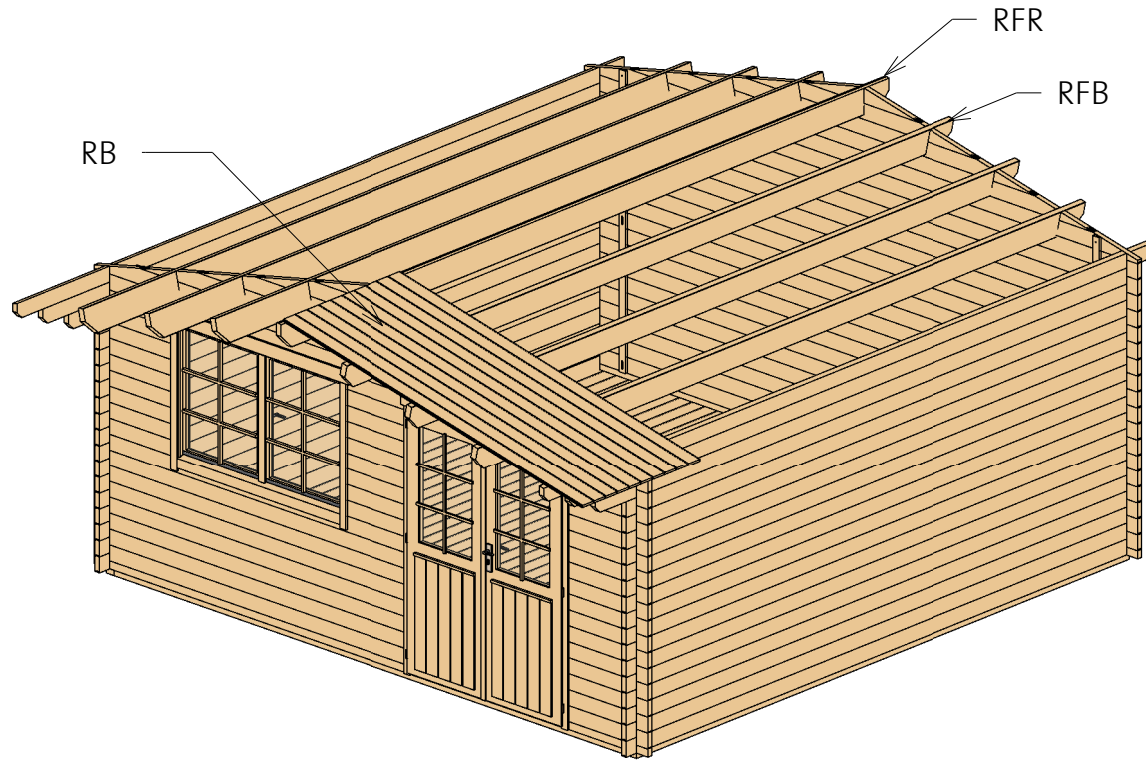





Log Profile Wall B	
Profile	Profile

40X114	
40X114	

Brunswick 40 (189"x189")

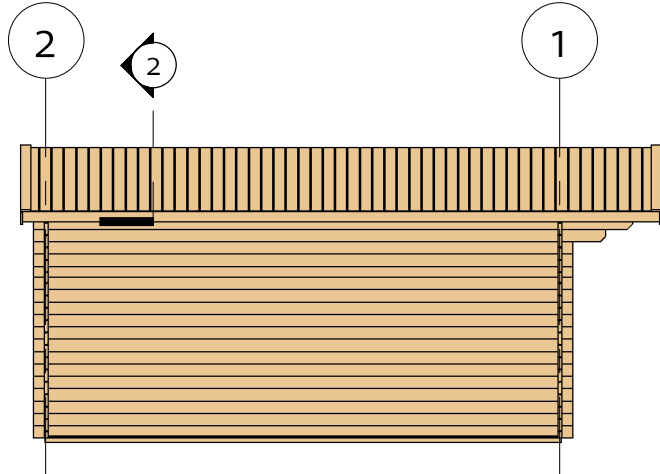
Roof 1



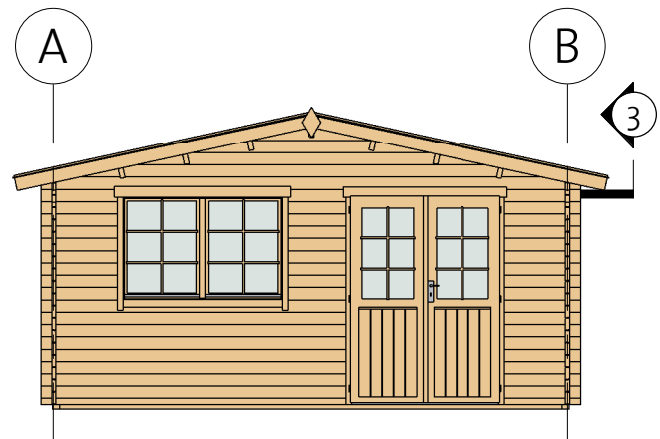
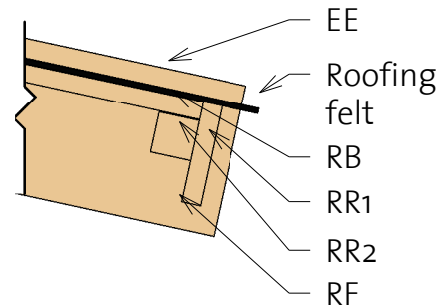
Roof				
Mark	Type	Profile	Count	Length
RFR	Ridge 45x195		1	232 1/4"
RFB	Beam 45x195		6	232 1/4"
RB	17x114		104	109"

Brunswick 40 (189"x189")

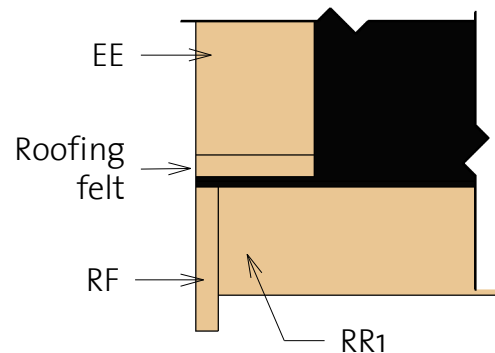
Roof 2



② Facia



③ Roof Reinforcement

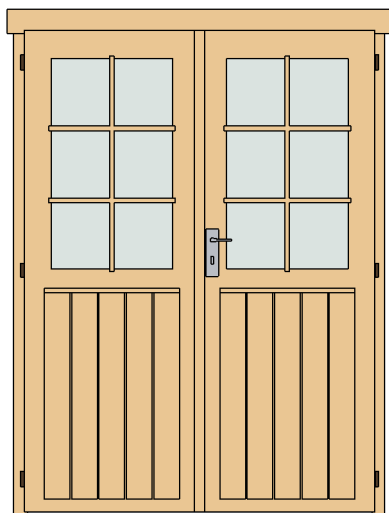


Fascia Schedule

Mark	Type	Profile	Count	Length
EE	Eave Edging 18x95		4	110 5/8"
RF	Roof Fascia 18x120		4	110 5/8"
RR1	Roof reinforcement 18x95		2	232 1/4"
RR2	Roof reinforcement 38x38		2	232 1/4"

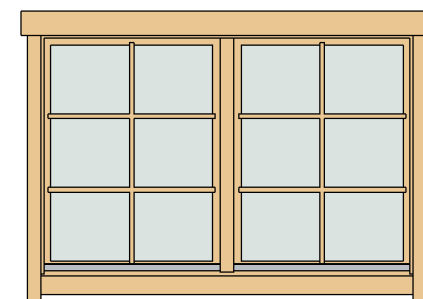
Brunswick 40 (189"x189")

Extras



Door Schedule				
Mark	Type	Width	Height	Count
CDD1R	Classic double door 1 right	56 1/8"	77"	1
DCB6	Door Crossbar 6	--	--	1/8"

Window Schedule				
Mark	Type	Width	Height	Count
CDW1	Classic double window 1	60 1/4"	39"	1
WCB6	Windows Crossbar 6	--	--	2



Fasteners & Extras		
Name	Type	Count

Hitblock	300-400 mm	
Bolts	M8 x 70	12
Screws	5,0 x 70	15
Nails	1,4 x 40	50
Screws	6,0 x 140	70
Screws	4,0 x 40	1130



Type	Count	Length
------	-------	--------

Windboard 18x40	4	2200
-----------------	---	------

Family	Count
--------	-------



Romb	2
------	---





Brunswick 40 (189"x189")

List of all items 1





Impregnated foundation beams

Mark	Type	Profile	Count	Length
IFB1	IFB 70x40		9	183 1/8"
IFB2	IFB 70x40		2	188 5/8"

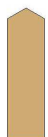
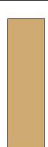

Floor Schedule

Mark	Type	Profile	Count	Length
FB	FB 17x114		43	185 5/8"
BB	BB 20x40		4	189"

Fascia Schedule

Mark	Type	Profile	Count	Length
EE	Eave Edging 18x95		4	110 5/8"
RF	Roof Fascia 18x120		4	110 5/8"
RR1	Roof reinforcement 18x95		2	232 1/4"
RR2	Roof reinforcement 38x38		2	232 1/4"

Roof

Mark	Type	Profile	Count	Length
RFR	Ridge 45x195		1	232 1/4"
RFB	Beam 45x195		6	232 1/4"
RB	17x114		104	109"

Brunswick 40 (189"x189")

List of all items 2

Wall 1			
Mark	Profile	Count	Cut Length

1BL-1	40X57	1	28 1/2"
1BL-2	40X57	1	111 5/8"
1LG-1	40X114	9	22 1/2"
1LG-2	40X114	26	28 1/2"
1LG-3*	40X114	1	41 3/8"
1LG-4*	40X114	1	82 5/8"
1LG-5*	40X114	1	123 7/8"
1LG-6*	40X114	1	165 1/4"
1LG-7	40X114	8	111 5/8"
1LG-8*	40X114	1	196 7/8"
1LG-9	40X114	1	196 7/8"

Wall A			
Mark	Profile	Count	Cut Length

ALG-1	40X114	16	196 7/8"
ALG-2	40X114	1	208 5/8"
ALG-3	40X114	1	218 1/2"
ATL-1	40X114	1	232 1/4"

Wall 2			
Mark	Profile	Count	Cut Length



2BL-1	40X57	1	196 7/8"
2LG-1*	40X114	1	41 3/8"
2LG-2*	40X114	1	82 5/8"
2LG-3*	40X114	1	123 7/8"
2LG-4*	40X114	1	165 1/4"
2LG-5*	40X114	1	196 7/8"
2LG-6	40X114	18	196 7/8"

* Gable - delivered premounted

Wall B			
Mark	Profile	Count	Cut Length

BLG-1	40X114	16	196 7/8"
BLG-2	40X114	1	208 5/8"
BLG-3	40X114	1	218 1/2"
BTL-1	40X114	1	232 1/4"

Log Profiles	
Profile	Profile

40X57	
40X114	

Log Profiles	
Profile	Profile

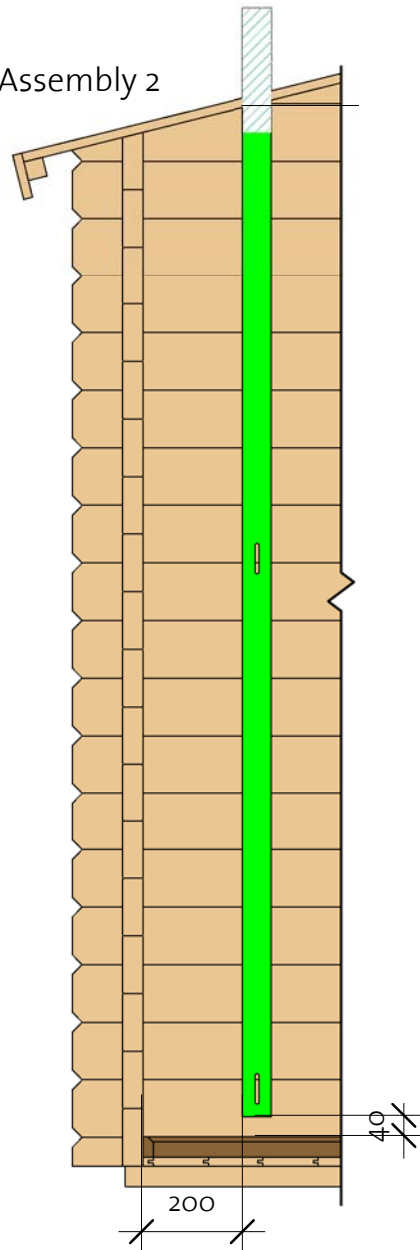
40X114	
--------	---

Windboard

① Windboard Assembly 1



② Windboard Assembly 2



③ Windboard Assembly 3

