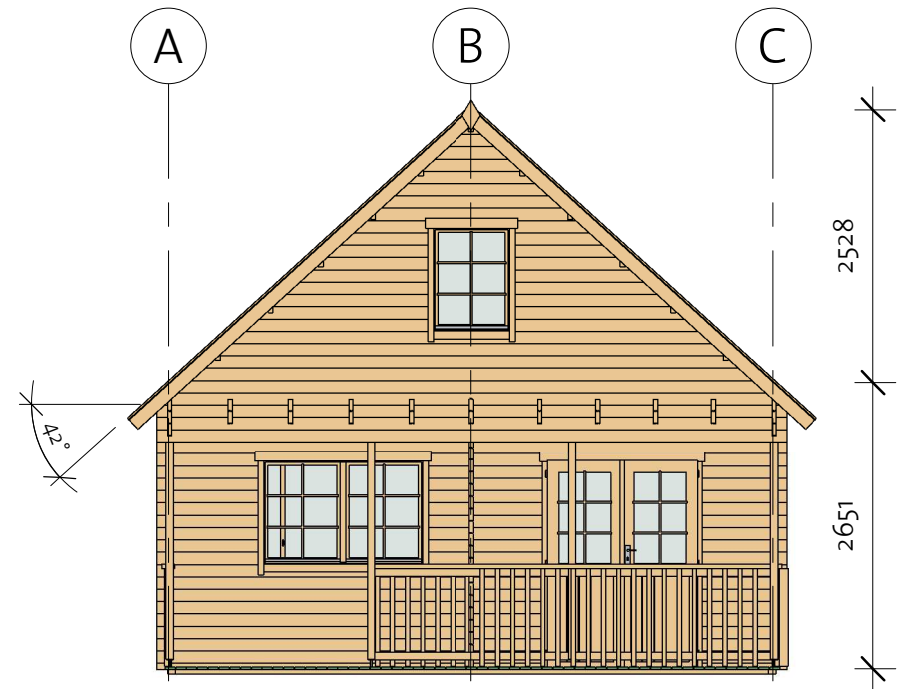
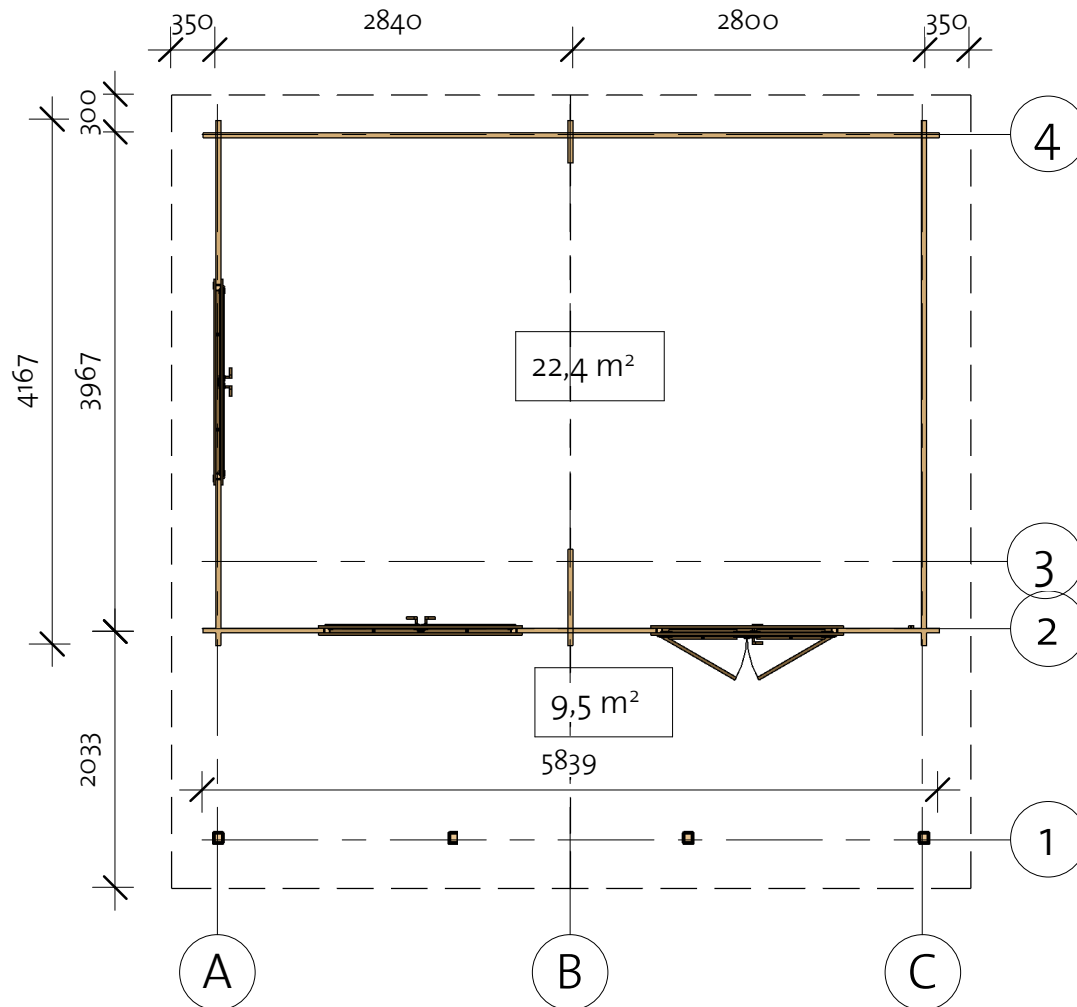
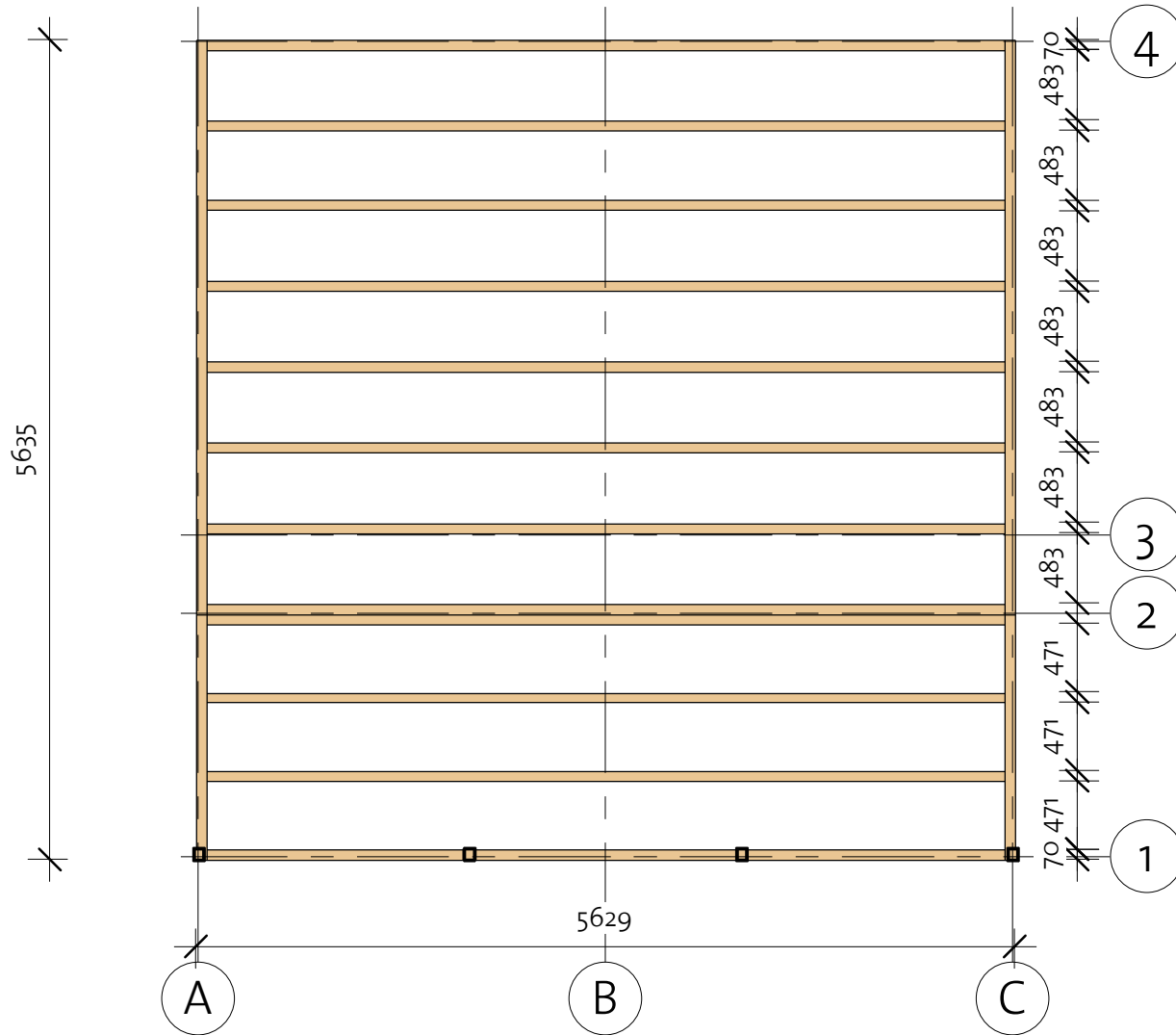



# Rivercrest 40 (564x564)



# Rivercrest 40 (564x564)

Foundation

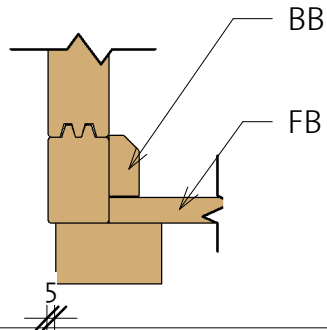


| Impregnated foundation beams |              |   |       |        |
|------------------------------|--------------|---|-------|--------|
| Mark                         | Type         | Profile   | Count | Length |
| IFB1                         | IFB<br>70x40 |  | 12    | 5489   |
| IFB2                         | IFB<br>70x40 |   | 2     | 1693   |
| IFB3                         | IFB<br>70x40 |   | 2     | 3942   |

# Rivercrest 40 (564x564)


Floor Plan


① Baseboard



Floor Schedule

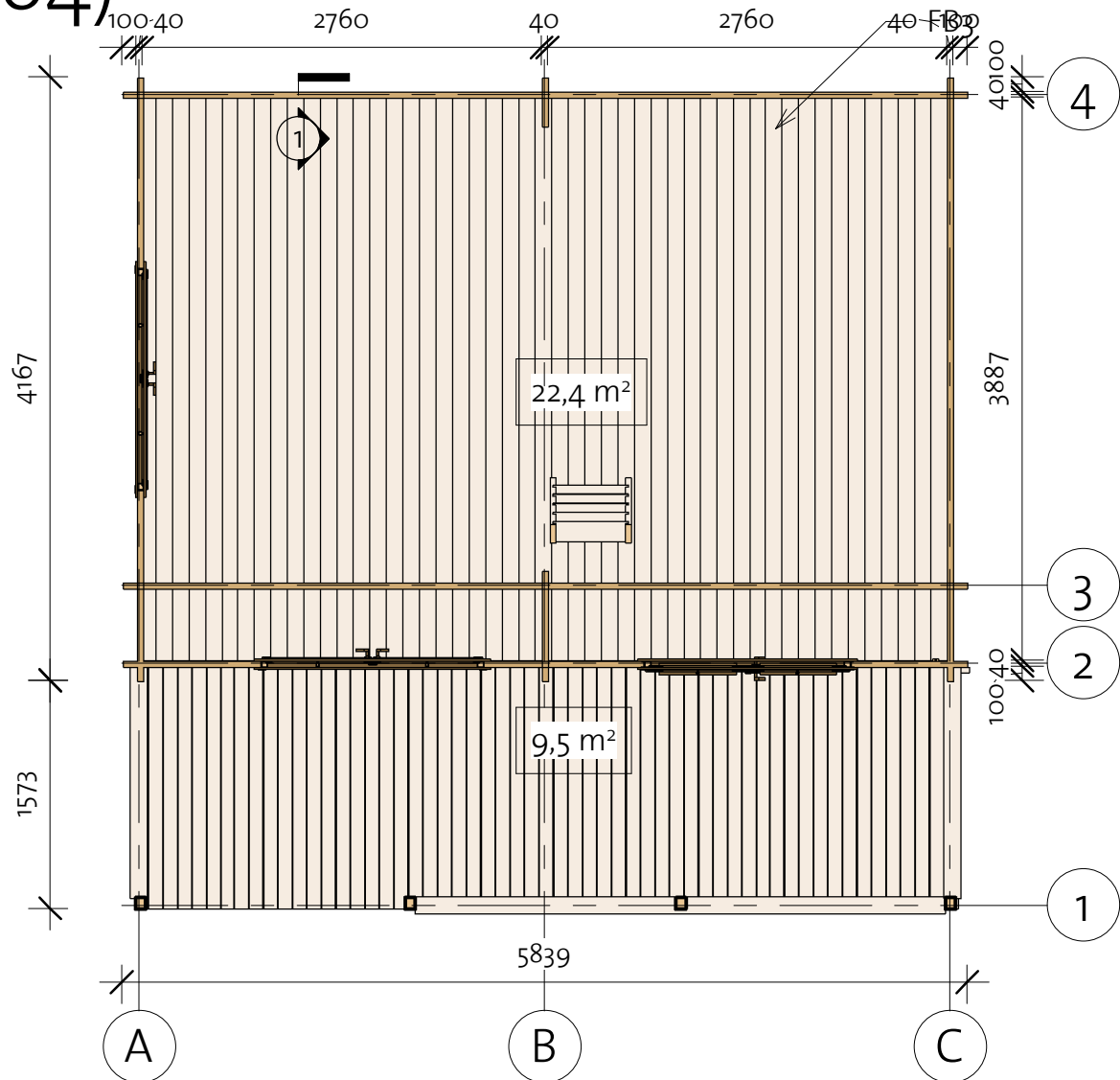
| Mark | Type | Profile | Count | Length |
|------|------|---------|-------|--------|
|------|------|---------|-------|--------|

|     |           |   |    |      |
|-----|-----------|---|----|------|
| FB1 | FB 17x114 |  | 49 | 3880 |
| FB2 | FB 17x114 |   | 19 | 5555 |

|      |          |   |   |      |
|------|----------|---|---|------|
| BB 1 | BB 18x40 |  | 5 | 5600 |
|------|----------|---|---|------|

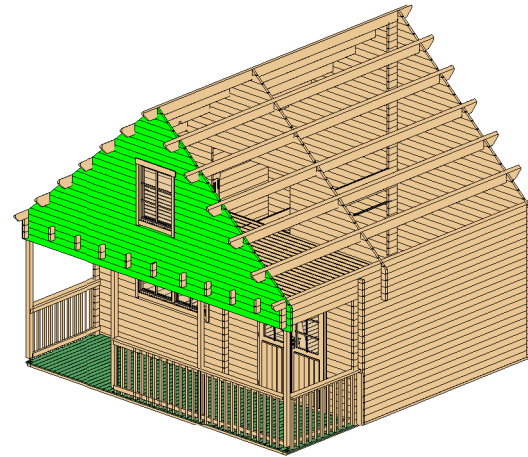
Terrace Schedule

|    |          |   |    |      |
|----|----------|---|----|------|
| TB | TB 21x95 |  | 57 | 1673 |
|----|----------|---|----|------|

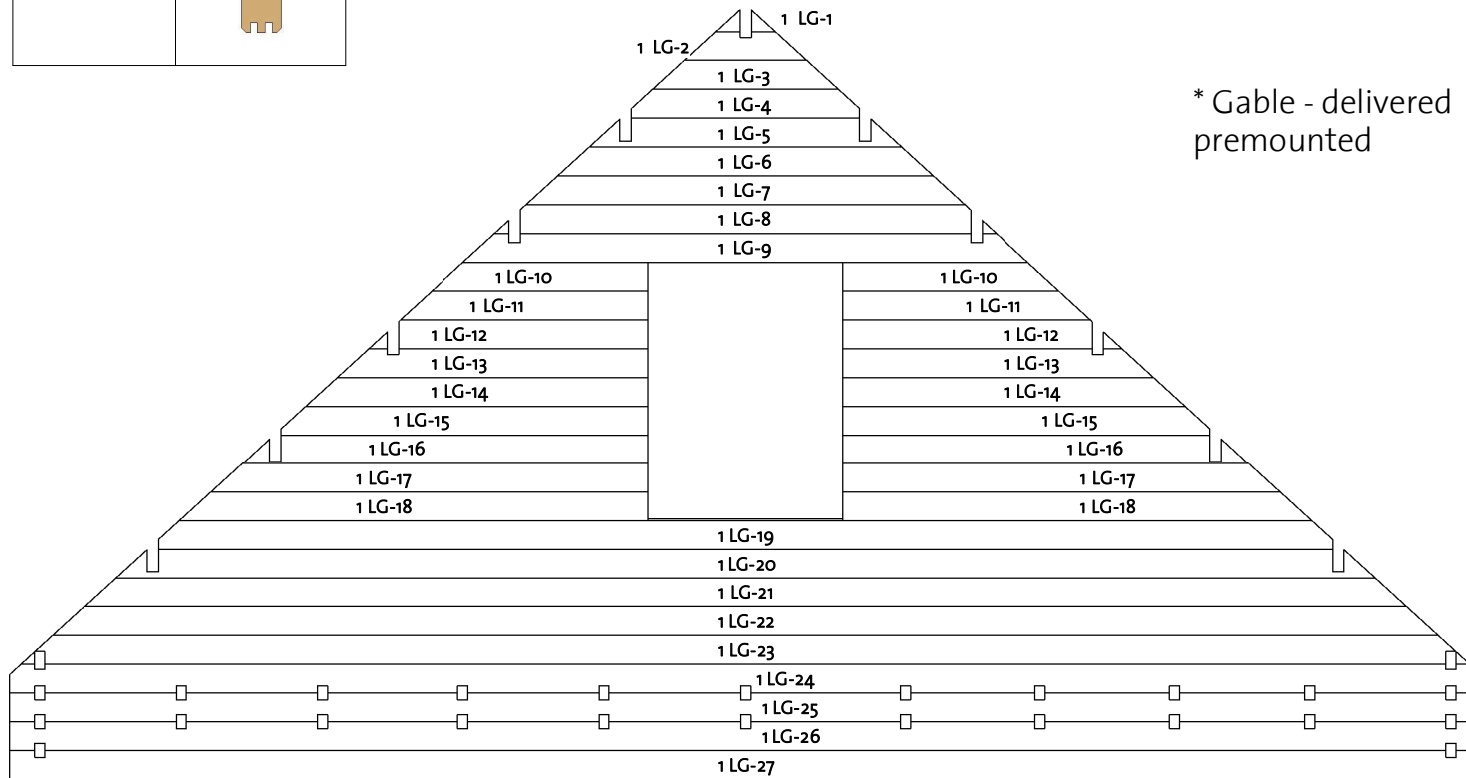
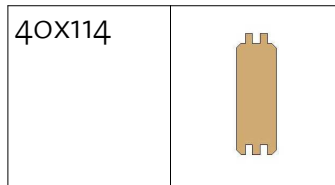


# Rivercrest 40 (564x564)

Wall 1



| Log Profile Wall 1 |         |
|--------------------|---------|
| Profile            | Profile |



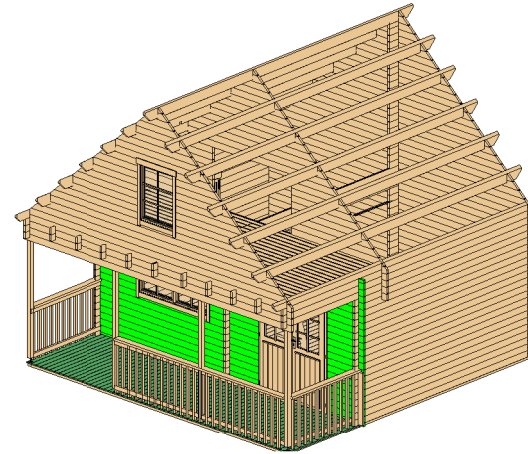
\* Gable - delivered premounted

| Wall 1 |         |       |            |
|--------|---------|-------|------------|
| Mark   | Profile | Count | Cut Length |

|          |        |   |      |
|----------|--------|---|------|
| 1LG-1 *  | 40X114 | 1 | 234  |
| 1LG-2 *  | 40X114 | 1 | 485  |
| 1LG-3 *  | 40X114 | 1 | 735  |
| 1LG-4 *  | 40X114 | 1 | 903  |
| 1LG-5 *  | 40X114 | 1 | 1237 |
| 1LG-6 *  | 40X114 | 1 | 1487 |
| 1LG-7 *  | 40X114 | 1 | 1738 |
| 1LG-8 *  | 40X114 | 1 | 1988 |
| 1LG-9 *  | 40X114 | 1 | 2239 |
| 1LG-10 * | 40X114 | 2 | 860  |
| 1LG-11 * | 40X114 | 2 | 985  |
| 1LG-12 * | 40X114 | 2 | 1111 |
| 1LG-13 * | 40X114 | 2 | 1236 |
| 1LG-14 * | 40X114 | 2 | 1361 |
| 1LG-15 * | 40X114 | 2 | 1459 |
| 1LG-16 * | 40X114 | 2 | 1612 |
| 1LG-17 * | 40X114 | 2 | 1737 |
| 1LG-18 * | 40X114 | 2 | 1862 |
| 1LG-19 * | 40X114 | 1 | 4660 |
| 1LG-20 * | 40X114 | 1 | 4996 |
| 1LG-21 * | 40X114 | 1 | 5247 |
| 1LG-22 * | 40X114 | 1 | 5497 |
| 1LG-23 * | 40X114 | 1 | 5748 |
| 1LG-24 * | 40X114 | 1 | 5839 |
| 1LG-25   | 40X114 | 1 | 5839 |
| 1LG-26   | 40X114 | 1 | 5839 |
| 1LG-27   | 40X114 | 1 | 5839 |

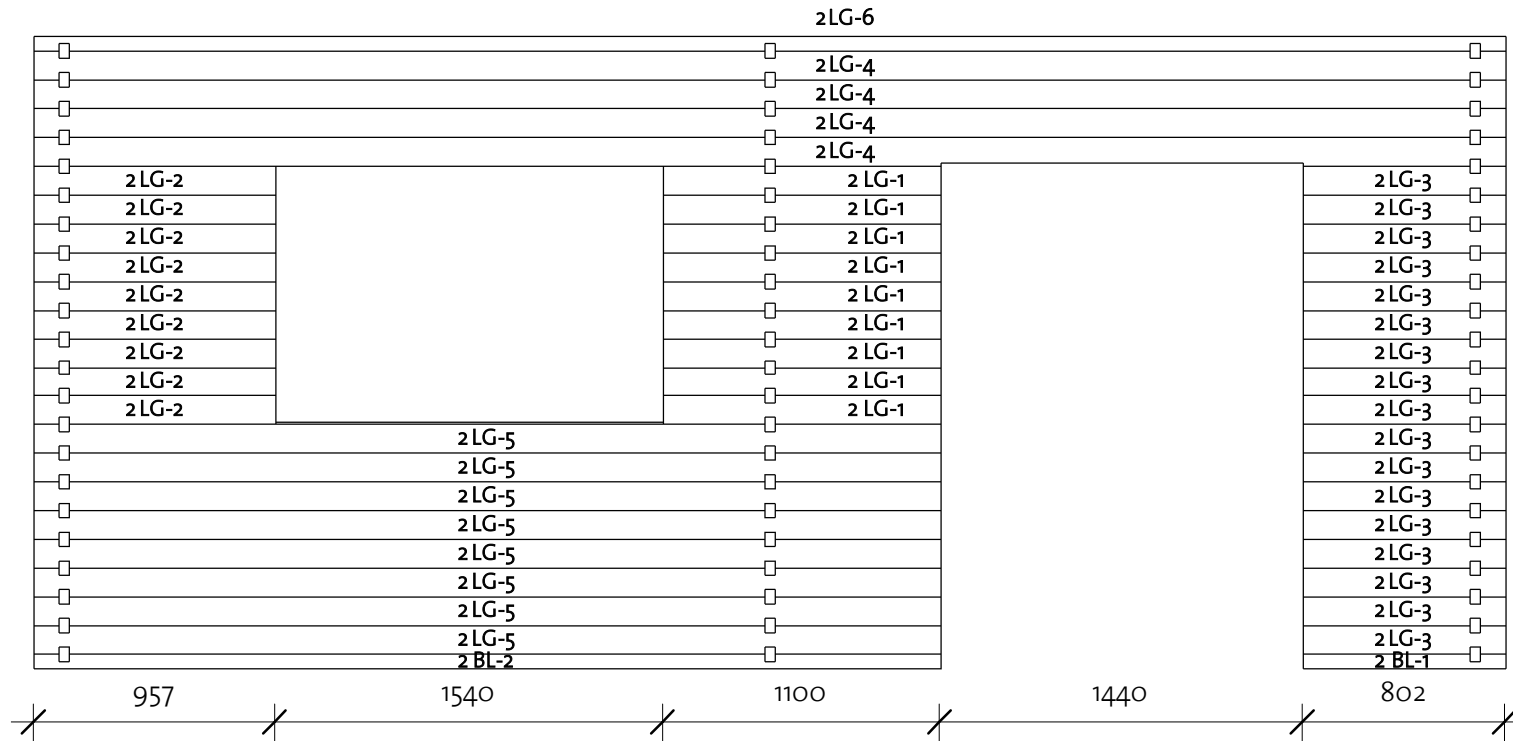
# Rivercrest 40 (564x564)

Wall 2



| Wall 2 |         |       |            |
|--------|---------|-------|------------|
| Mark   | Profile | Count | Cut Length |

|       |        |    |      |
|-------|--------|----|------|
| 2BL-1 | 40x57  | 1  | 802  |
| 2BL-2 | 40x57  | 1  | 3597 |
| 2LG-1 | 40x114 | 9  | 1100 |
| 2LG-2 | 40x114 | 9  | 957  |
| 2LG-3 | 40x114 | 17 | 802  |
| 2LG-4 | 40x114 | 4  | 5839 |
| 2LG-5 | 40x114 | 8  | 3597 |
| 2LG-6 | 40x57  | 1  | 5839 |



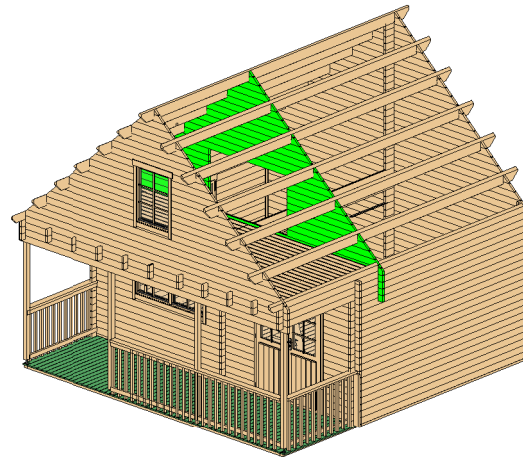
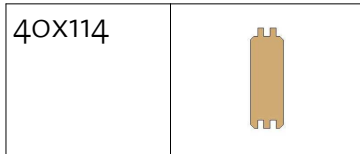
| Log Profile Wall 2 |         |
|--------------------|---------|
| Profile            | Profile |

|        |  |
|--------|--|
| 40x57  |  |
| 40x114 |  |

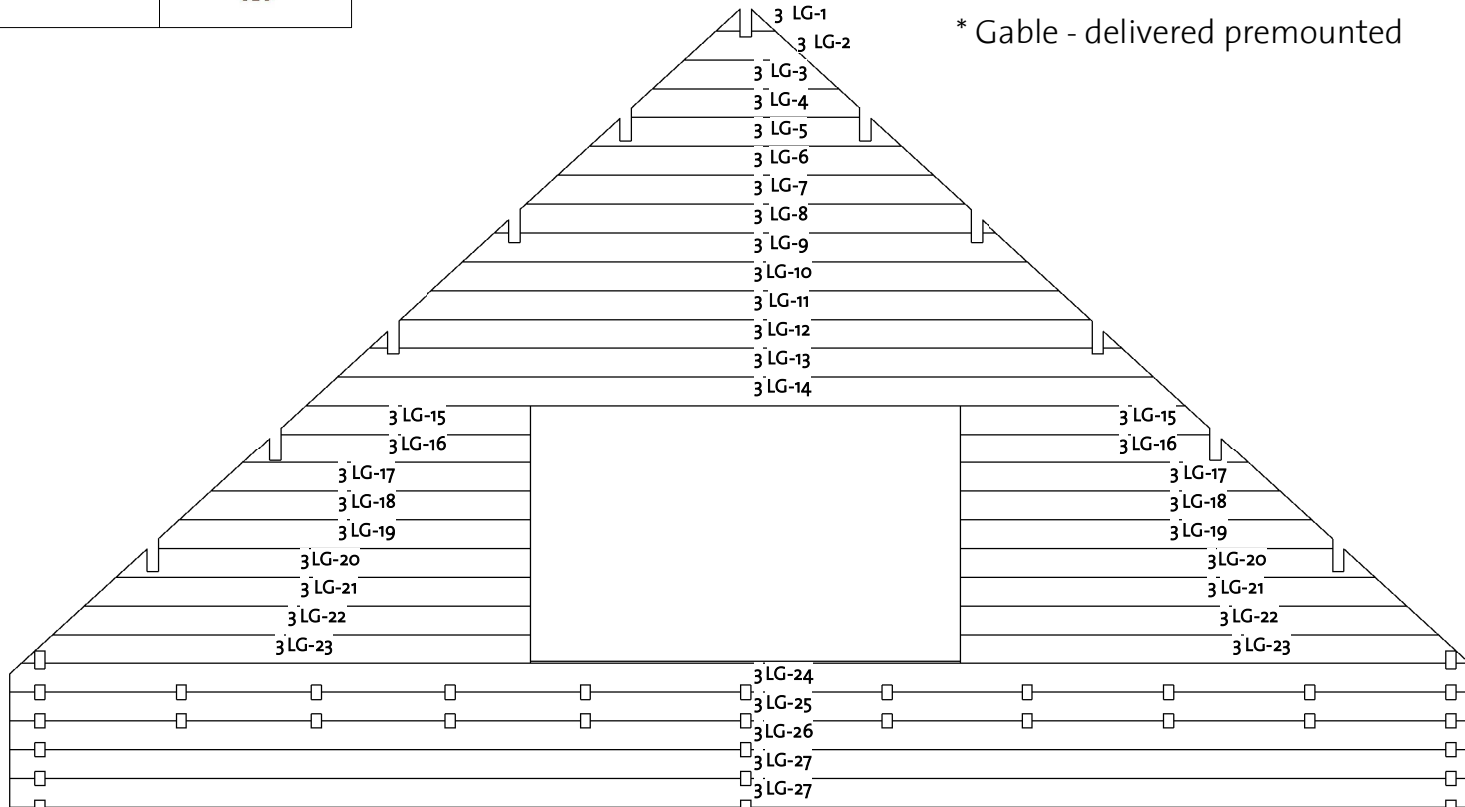
# Rivercrest 40 (564x564)

Wall 3

| Log Profile Wall 3 |         |
|--------------------|---------|
| Profile            | Profile |



\* Gable - delivered premounted

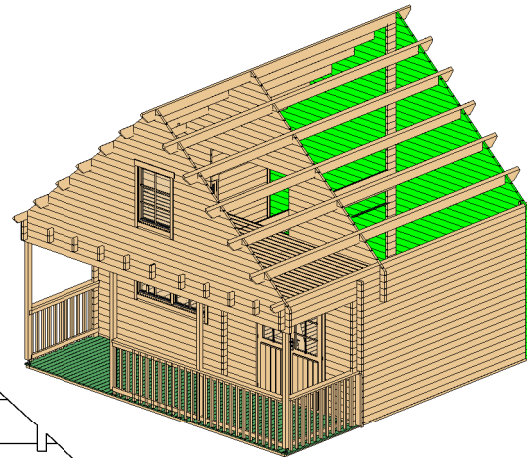


| Wall 3 |         |       |            |
|--------|---------|-------|------------|
| Mark   | Profile | Count | Cut Length |


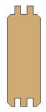
|          |        |   |      |
|----------|--------|---|------|
| 3LG-1 *  | 40X114 | 1 | 234  |
| 3LG-2 *  | 40X114 | 1 | 485  |
| 3LG-3 *  | 40X114 | 1 | 735  |
| 3LG-4 *  | 40X114 | 1 | 903  |
| 3LG-5 *  | 40X114 | 1 | 1237 |
| 3LG-6 *  | 40X114 | 1 | 1487 |
| 3LG-7 *  | 40X114 | 1 | 1738 |
| 3LG-8 *  | 40X114 | 1 | 1988 |
| 3LG-9 *  | 40X114 | 1 | 2239 |
| 3LG-10 * | 40X114 | 1 | 2490 |
| 3LG-11 * | 40X114 | 1 | 2740 |
| 3LG-12 * | 40X114 | 1 | 2991 |
| 3LG-13 * | 40X114 | 1 | 3242 |
| 3LG-14 * | 40X114 | 1 | 3492 |
| 3LG-15 * | 40X114 | 2 | 994  |
| 3LG-16 * | 40X114 | 2 | 1147 |
| 3LG-17 * | 40X114 | 2 | 1272 |
| 3LG-18 * | 40X114 | 2 | 1397 |
| 3LG-19 * | 40X114 | 2 | 1480 |
| 3LG-20 * | 40X114 | 2 | 1648 |
| 3LG-21 * | 40X114 | 2 | 1773 |
| 3LG-22 * | 40X114 | 2 | 1899 |
| 3LG-23 * | 40X114 | 2 | 2024 |
| 3LG-24 * | 40X114 | 1 | 5839 |
| 3LG-25   | 40X114 | 1 | 5839 |
| 3LG-26   | 40X114 | 1 | 5839 |
| 3LG-27   | 40X114 | 2 | 5839 |

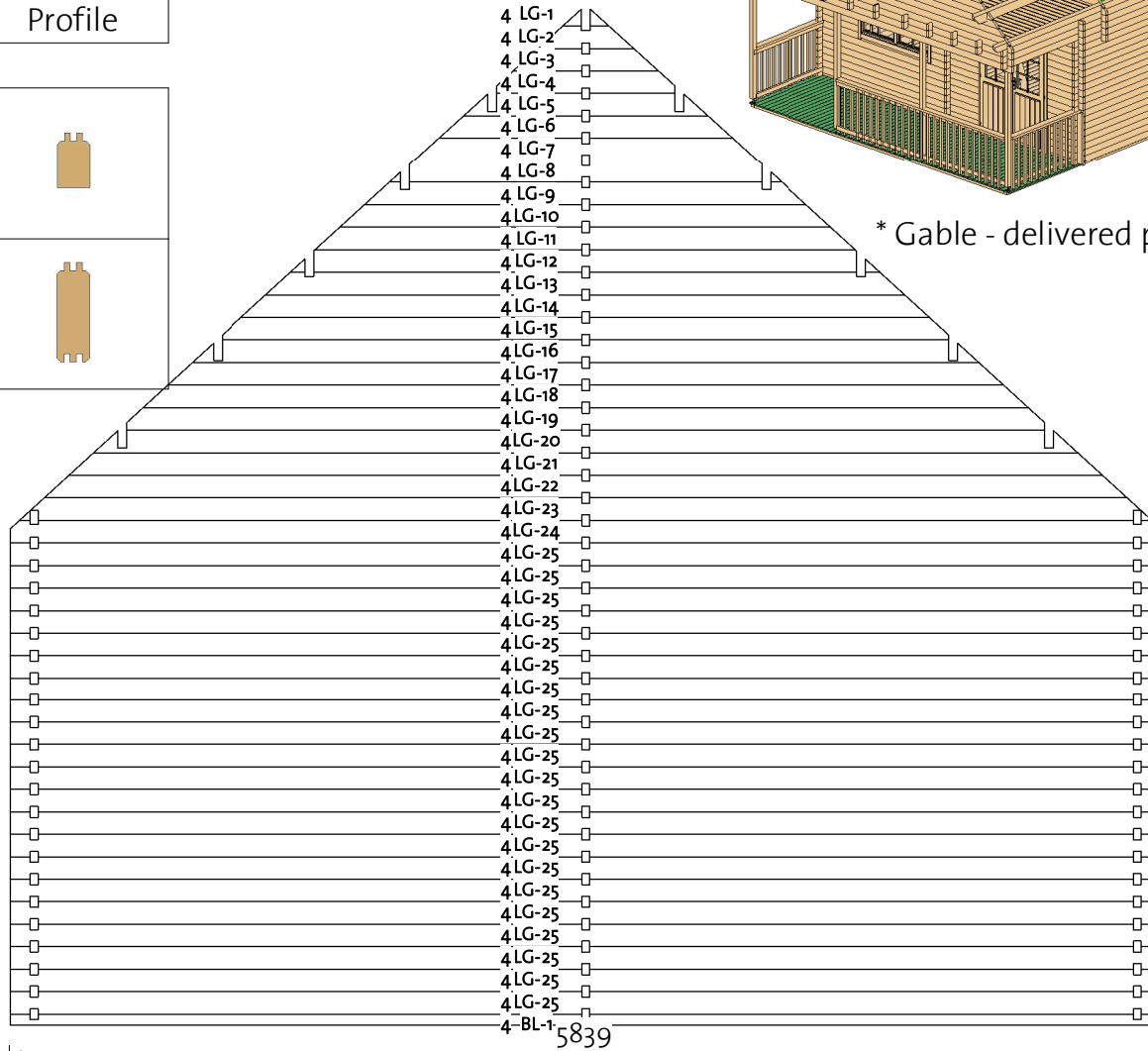
# Rivercrest 40 (564x564)

Wall 4



| Log Profile Wall 4 |         |
|--------------------|---------|
| Profile            | Profile |

|        |   |
|--------|---|
| 40x57  |  |
| 40x114 |  |



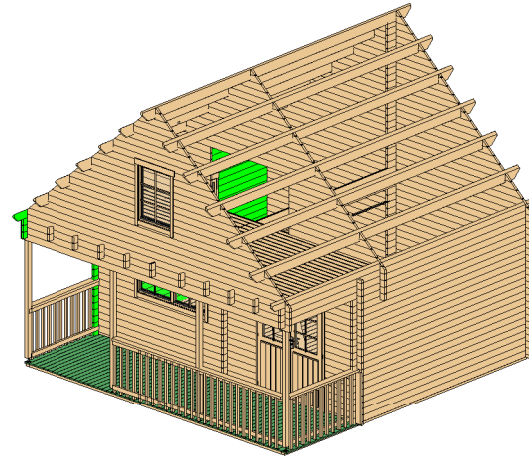
\* Gable - delivered pre-mounted

| Wall 4 |         |       |            |
|--------|---------|-------|------------|
| Mark   | Profile | Count | Cut Length |

|          |        |    |      |
|----------|--------|----|------|
| 4BL-1 *  | 40x57  | 1  | 5839 |
| 4LG-1 *  | 40x114 | 1  | 234  |
| 4LG-2 *  | 40x114 | 1  | 485  |
| 4LG-3 *  | 40x114 | 1  | 735  |
| 4LG-4 *  | 40x114 | 1  | 903  |
| 4LG-5 *  | 40x114 | 1  | 1237 |
| 4LG-6 *  | 40x114 | 1  | 1487 |
| 4LG-7 *  | 40x114 | 1  | 1738 |
| 4LG-8 *  | 40x114 | 1  | 1988 |
| 4LG-9 *  | 40x114 | 1  | 2239 |
| 4LG-10 * | 40x114 | 1  | 2490 |
| 4LG-11 * | 40x114 | 1  | 2740 |
| 4LG-12 * | 40x114 | 1  | 2991 |
| 4LG-13 * | 40x114 | 1  | 3242 |
| 4LG-14 * | 40x114 | 1  | 3492 |
| 4LG-15 * | 40x114 | 1  | 3688 |
| 4LG-16 * | 40x114 | 1  | 3994 |
| 4LG-17 * | 40x114 | 1  | 4244 |
| 4LG-18 * | 40x114 | 1  | 4495 |
| 4LG-19 * | 40x114 | 1  | 4660 |
| 4LG-20 * | 40x114 | 1  | 4996 |
| 4LG-21 * | 40x114 | 1  | 5247 |
| 4LG-22 * | 40x114 | 1  | 5497 |
| 4LG-23 * | 40x114 | 1  | 5748 |
| 4LG-24 * | 40x114 | 1  | 5839 |
| 4LG-25   | 40x114 | 21 | 5839 |

# Rivercrest 40 (564x564)

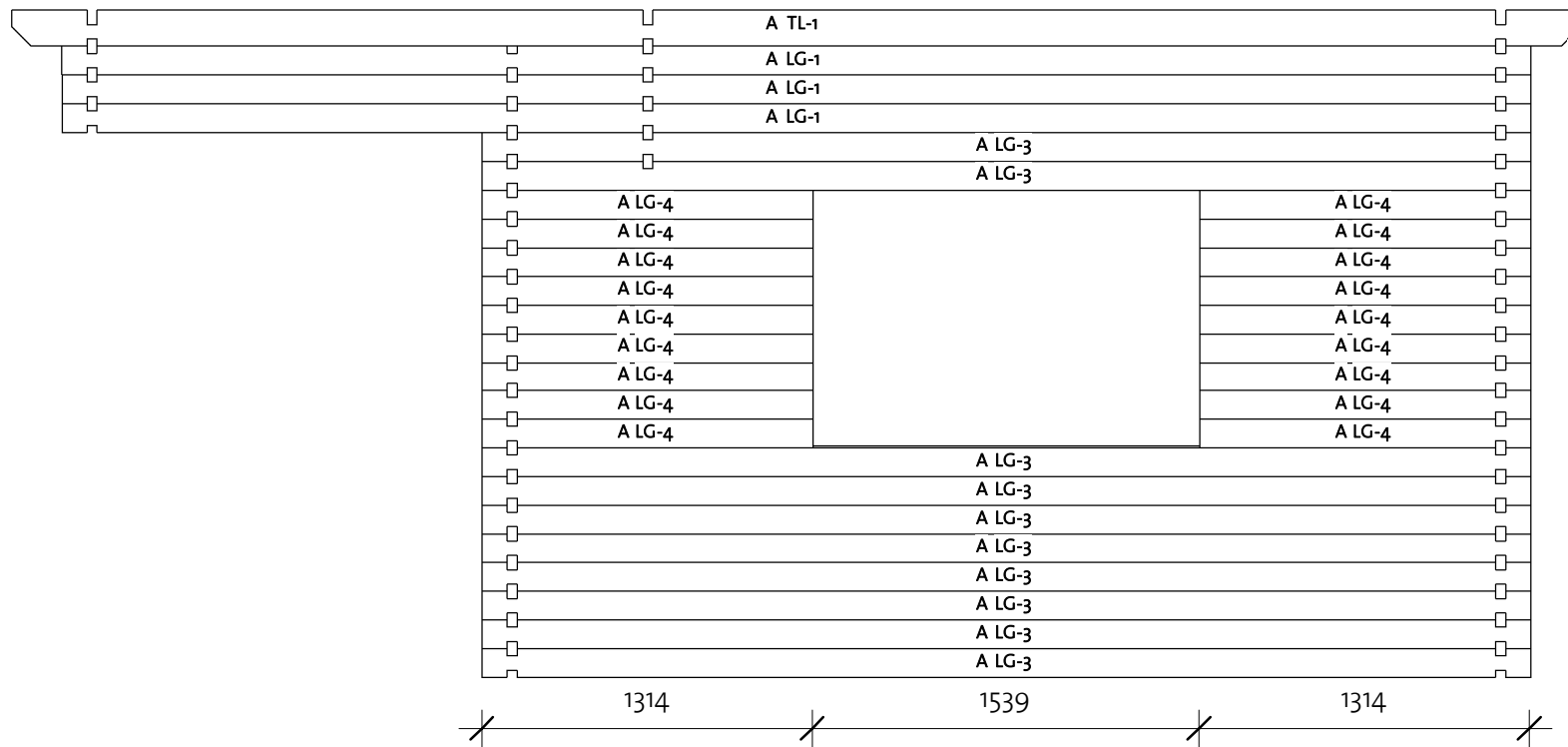
Wall A



Wall A

| Mark | Profile | Count | Cut Length |
|------|---------|-------|------------|
|------|---------|-------|------------|

|       |        |    |      |
|-------|--------|----|------|
| ALG-1 | 40X114 | 3  | 5839 |
| ALG-3 | 40X114 | 10 | 4167 |
| ALG-4 | 40X114 | 18 | 1314 |
| ATL-1 | 40X143 | 1  | 6239 |



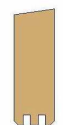
Log Profile Wall A

| Profile | Profile |
|---------|---------|
|---------|---------|

40X114



40X143

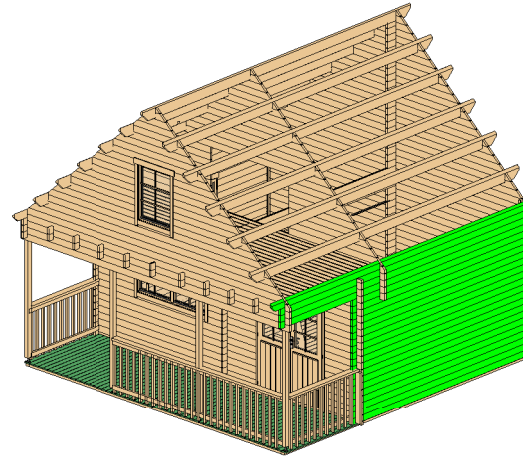






# Rivercrest 40 (564x564)

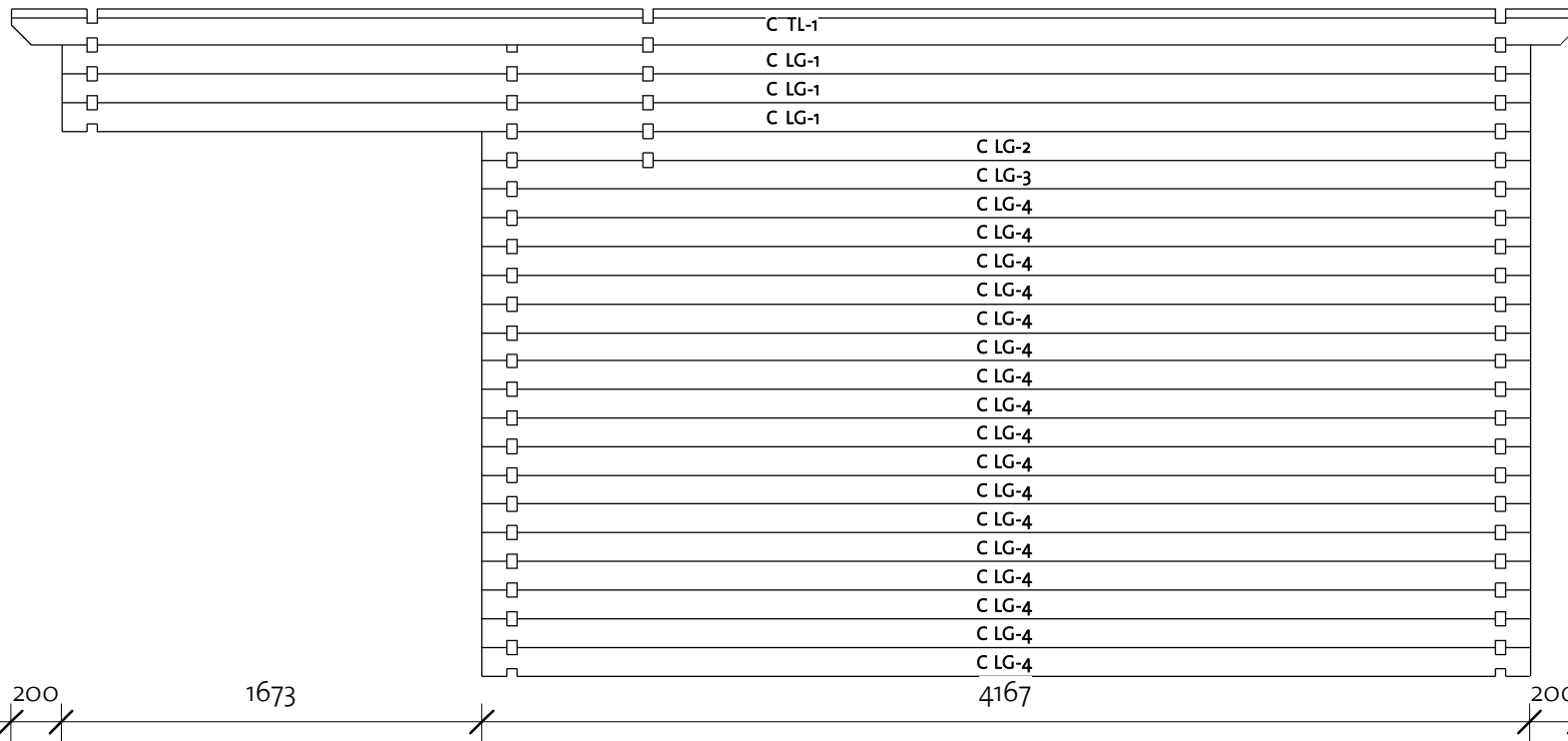
Wall C



Wall C

| Mark | Profile | Count | Cut Length |
|------|---------|-------|------------|
|------|---------|-------|------------|

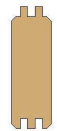
|       |        |    |      |
|-------|--------|----|------|
| CLG-1 | 40X114 | 3  | 5839 |
| CLG-2 | 40X114 | 1  | 4167 |
| CLG-3 | 40X114 | 1  | 4167 |
| CLG-4 | 40X114 | 17 | 4167 |
| CTL-1 | 40X143 | 1  | 6239 |



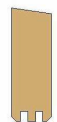
Log Profile Wall C

| Profile | Profile |
|---------|---------|
|---------|---------|

40X114

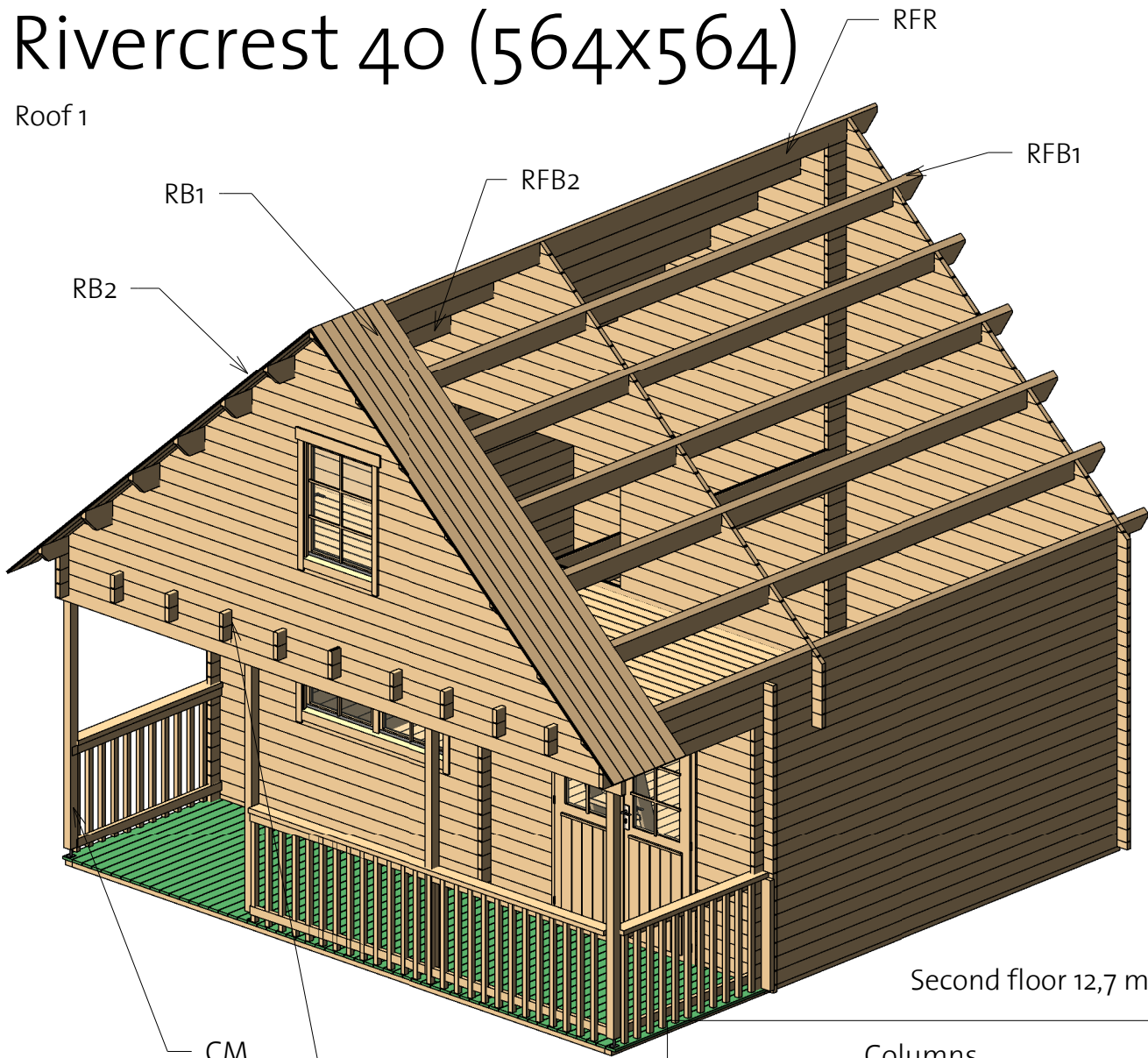


40X143



# Rivercrest 40 (564x564)

Roof 1


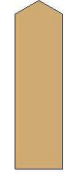
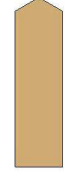


Second floor 12,7 m2

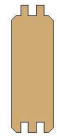
## Columns

| Mark | Profile    | Count | Length |
|------|------------|-------|--------|
| CM   | Post 80x70 | 4     | 2070   |

## Roof

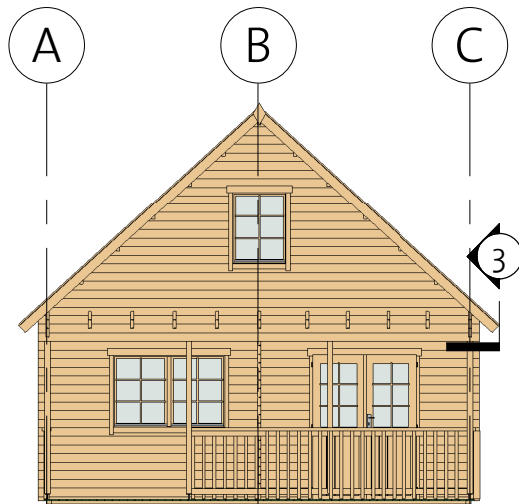
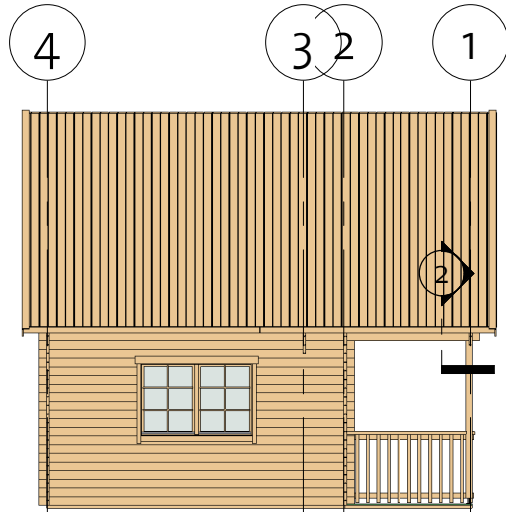
| Mark | Type         | Profile  | Count | Length |
|------|--------------|--|-------|--------|
| RB1  | 17x114       |   | 55    | 4212   |
| RB2  | 17x114       |  | 55    | 4229   |
| RFB1 | Beam 45x195  |   | 5     | 6239   |
| RFB2 | Beam 45x195  |  | 5     | 6239   |
| RFR  | Ridge 45x195 |  | 1     | 6239   |

## Second floor schedule

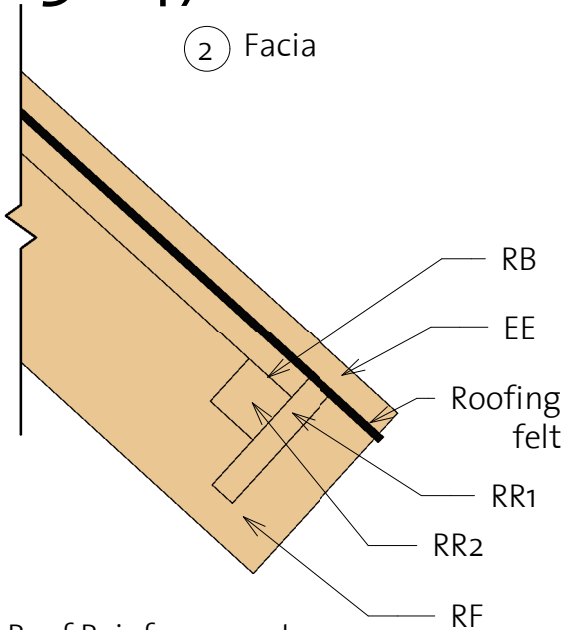
| Mark | Type       | Profile   | Count | Length |
|------|------------|---|-------|--------|
| CL1  | Log 40x114 |  | 8     | 2451   |
| CL2  | Log 40x114 |   | 8     | 2451   |

# Rivercrest 40 (564x564)

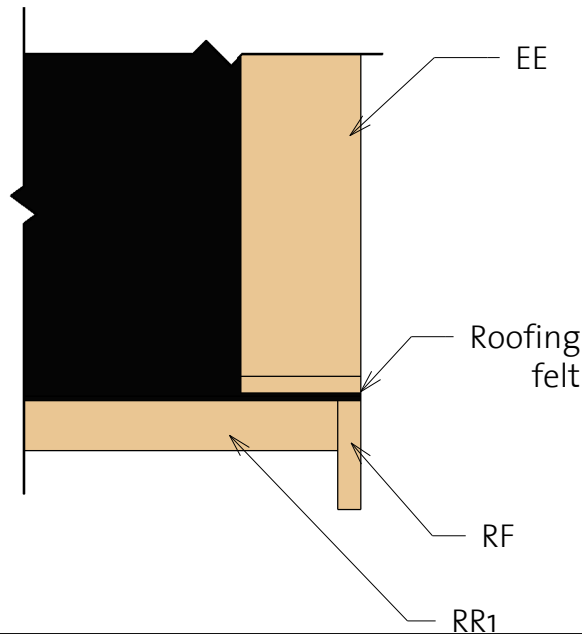
Roof 2



② Facia



③ Roof Reinforcement

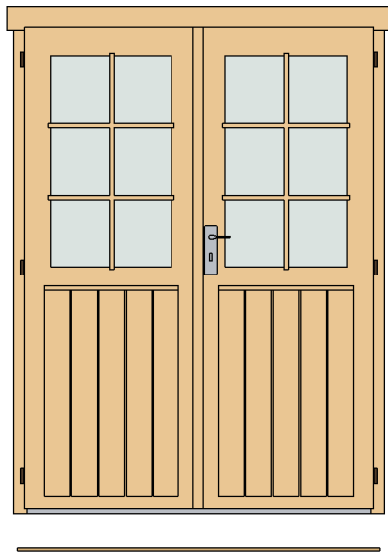


Fascia Schedule

| Mark | Type                        | Profile | Count | Length |
|------|-----------------------------|---------|-------|--------|
| EE   | Eave Edging<br>18x95        |         | 4     | 4290   |
| RF   | Roof Fascia<br>18x120       |         | 4     | 4290   |
| RR1  | Roof reinforcement<br>18x95 |         | 4     | 3120   |
| RR2  | Roof reinforcement<br>38x38 |         | 4     | 3120   |

# Rivercrest 40 (564x564)

Extras



| Door Schedule |                                |       |        |       |
|---------------|--------------------------------|-------|--------|-------|
| Model         | Type                           | Width | Height | Count |
| CDD1R         | Classic double door<br>1 right | 1425  | 1955   | 1     |
| DCB6          | Door Crossbar 6                | --    | --     | 2     |
| DB            | Door beam<br>1440 mm           | 40    | 12     | 1     |

| Type                 | Count | Length |
|----------------------|-------|--------|
| Windboard<br>18x40   | 2     | 2600   |
| Windboard<br>18x40 2 | 2     | 2200   |

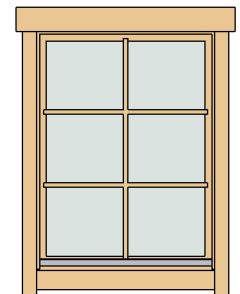
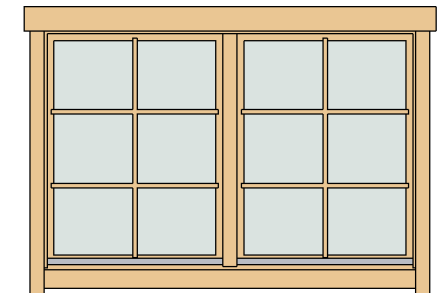
| Type | Count |
|------|-------|
| Romb | 2     |



| Fasteners/Extras |      |       |
|------------------|------|-------|
| Name             | Type | Count |

|          |            |      |
|----------|------------|------|
| Hitblock | 300-400 mm |      |
| Bolts    | M8x70      | 12   |
| Nails    | 1,4 x 40   | 50   |
| Nails    | 1,4 x 40   | 90   |
| Screws   | 6,0 x 140  | 120  |
| Screws   | 5,0 x 70   | 125  |
| Screws   | 4,0 x 40   | 1600 |


| Window Schedule |                         |       |        |       |
|-----------------|-------------------------|-------|--------|-------|
| Mark            | Type                    | Width | Height | Count |
| CDW1            | Classic double window 1 | 1530  | 990    | 2     |
| CW1L            | Classic window 1 left   | 765   | 990    | 1     |
| WCB6            | Windows Crossbar 6      | --    | --     | 5     |






# Rivercrest 40 (564x564)

## List of all items 1


### Impregnated foundation beams


| Mark | Type         | Profile   | Count | Length |
|------|--------------|---|-------|--------|
| IFB1 | IFB<br>70x40 |  | 12    | 5489   |
| IFB2 | IFB<br>70x40 |   | 2     | 1693   |
| IFB3 | IFB<br>70x40 |   | 2     | 3942   |

### Roof

| Mark | Type            | Profile   | Count | Length |
|------|-----------------|---|-------|--------|
| RB1  | 17x114          |  | 55    | 4212   |
| RB2  | 17x114          |   | 55    | 4229   |
| RFB1 | Beam<br>45x195  |  | 5     | 6239   |
| RFB2 | Beam<br>45x195  |   | 5     | 6239   |
| RFR  | Ridge<br>45x195 |  | 1     | 6239   |

### Floor Schedule





| Mark | Type      | Profile   | Count | Length |
|------|-----------|---|-------|--------|
| FB1  | FB 17x114 |  | 49    | 3880   |
| FB2  | FB 17x114 |   | 19    | 5555   |

| Mark | Type     | Profile   | Count | Length |
|------|----------|---|-------|--------|
| BB 1 | BB 18x40 |  | 5     | 5600   |

### Terrace Schedule

| Mark | Type     | Profile   | Count | Length |
|------|----------|---|-------|--------|
| TB   | TB 21x95 |  | 57    | 1673   |

### Fascia Schedule

| Mark | Type                               | Profile   | Count | Length |
|------|------------------------------------|---|-------|--------|
| EE   | Eave<br>Edging<br>18x95            |  | 4     | 4290   |
| RF   | Roof<br>Fascia<br>18x120           |  | 4     | 4290   |
| RR1  | Roof<br>reinforce<br>ment<br>18x95 |  | 4     | 3120   |
| RR2  | Roof<br>reinforce<br>ment<br>38x38 |  | 4     | 3120   |

# Rivercrest 40 (564x564)

## List of all items 2

| Wall 1 |         |       |            |
|--------|---------|-------|------------|
| Mark   | Profile | Count | Cut Length |

|          |        |   |      |
|----------|--------|---|------|
| 1LG-1    | 40X114 | 1 | 234  |
| 1LG-2 *  | 40X114 | 1 | 485  |
| 1LG-3 *  | 40X114 | 1 | 735  |
| 1LG-4 *  | 40X114 | 1 | 903  |
| 1LG-5 *  | 40X114 | 1 | 1237 |
| 1LG-6 *  | 40X114 | 1 | 1487 |
| 1LG-7 *  | 40X114 | 1 | 1738 |
| 1LG-8 *  | 40X114 | 1 | 1988 |
| 1LG-9 *  | 40X114 | 1 | 2239 |
| 1LG-10 * | 40X114 | 2 | 860  |
| 1LG-11 * | 40X114 | 2 | 985  |
| 1LG-12 * | 40X114 | 2 | 1111 |
| 1LG-13 * | 40X114 | 2 | 1236 |
| 1LG-14 * | 40X114 | 2 | 1361 |
| 1LG-15 * | 40X114 | 2 | 1459 |
| 1LG-16 * | 40X114 | 2 | 1612 |
| 1LG-17 * | 40X114 | 2 | 1737 |
| 1LG-18 * | 40X114 | 2 | 1862 |
| 1LG-19 * | 40X114 | 1 | 4660 |
| 1LG-20 * | 40X114 | 1 | 4996 |
| 1LG-21 * | 40X114 | 1 | 5247 |
| 1LG-22 * | 40X114 | 1 | 5497 |
| 1LG-23 * | 40X114 | 1 | 5748 |
| 1LG-24 * | 40X114 | 1 | 5839 |
| 1LG-25   | 40X114 | 1 | 5839 |
| 1LG-26   | 40X114 | 1 | 5839 |
| 1LG-27   | 40X114 | 1 | 5839 |

| Wall C |         |       |            |
|--------|---------|-------|------------|
| Mark   | Profile | Count | Cut Length |

|       |        |    |      |
|-------|--------|----|------|
| CLG-1 | 40X114 | 3  | 5839 |
| CLG-2 | 40X114 | 1  | 4167 |
| CLG-3 | 40X114 | 1  | 4167 |
| CLG-4 | 40X114 | 17 | 4167 |
| CTL-1 | 40X143 | 1  | 6239 |

| Wall 2 |         |       |            |
|--------|---------|-------|------------|
| Mark   | Profile | Count | Cut Length |

|       |        |    |      |
|-------|--------|----|------|
| 2BL-1 | 40X57  | 1  | 802  |
| 2BL-2 | 40X57  | 1  | 3597 |
| 2LG-1 | 40X114 | 9  | 1100 |
| 2LG-2 | 40X114 | 9  | 957  |
| 2LG-3 | 40X114 | 17 | 802  |
| 2LG-4 | 40X114 | 4  | 5839 |
| 2LG-5 | 40X114 | 8  | 3597 |
| 2LG-6 | 40X57  | 1  | 5839 |

\* Gable - delivered premounted

| Wall A |         |       |            |
|--------|---------|-------|------------|
| Mark   | Profile | Count | Cut Length |

|       |        |    |      |
|-------|--------|----|------|
| ALG-1 | 40X114 | 3  | 5839 |
| ALG-3 | 40X114 | 10 | 4167 |
| ALG-4 | 40X114 | 18 | 1314 |
| ATL-1 | 40X143 | 1  | 6239 |

| Wall B |         |       |            |
|--------|---------|-------|------------|
| Mark   | Profile | Count | Cut Length |

|       |        |    |      |
|-------|--------|----|------|
| BLG-1 | 40X114 | 1  | 5839 |
| BLG-2 | 40X114 | 41 | 340  |
| BLG-3 | 40X114 | 1  | 4167 |
| BLG-4 | 40X114 | 1  | 778  |
| BLG-5 | 40X114 | 1  | 778  |
| BLG-6 | 40X114 | 17 | 778  |
| BLG-7 | 40X114 | 1  | 5839 |

# Rivercrest 40 (564x564)

## List of all items 3

| Wall 3 |         |       |            |
|--------|---------|-------|------------|
| Mark   | Profile | Count | Cut Length |

|        |        |   |      |
|--------|--------|---|------|
| 3LG-1  | 40X114 | 1 | 234  |
| 3LG-2  | 40X114 | 1 | 485  |
| 3LG-3  | 40X114 | 1 | 735  |
| 3LG-4  | 40X114 | 1 | 903  |
| 3LG-5  | 40X114 | 1 | 1237 |
| 3LG-6  | 40X114 | 1 | 1487 |
| 3LG-7  | 40X114 | 1 | 1738 |
| 3LG-8  | 40X114 | 1 | 1988 |
| 3LG-9  | 40X114 | 1 | 2239 |
| 3LG-10 | 40X114 | 1 | 2490 |
| 3LG-11 | 40X114 | 1 | 2740 |
| 3LG-12 | 40X114 | 1 | 2991 |
| 3LG-13 | 40X114 | 1 | 3242 |
| 3LG-14 | 40X114 | 1 | 3492 |
| 3LG-15 | 40X114 | 2 | 994  |
| 3LG-16 | 40X114 | 2 | 1147 |
| 3LG-17 | 40X114 | 2 | 1272 |
| 3LG-18 | 40X114 | 2 | 1397 |
| 3LG-19 | 40X114 | 2 | 1480 |
| 3LG-20 | 40X114 | 2 | 1648 |
| 3LG-21 | 40X114 | 2 | 1773 |
| 3LG-22 | 40X114 | 2 | 1899 |
| 3LG-23 | 40X114 | 2 | 2024 |
| 3LG-24 | 40X114 | 1 | 5839 |
| 3LG-25 | 40X114 | 1 | 5839 |
| 3LG-26 | 40X114 | 1 | 5839 |
| 3LG-27 | 40X114 | 2 | 5839 |

| Wall 4 |         |       |            |
|--------|---------|-------|------------|
| Mark   | Profile | Count | Cut Length |


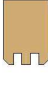


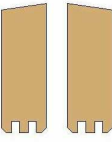
|        |        |    |      |
|--------|--------|----|------|
| 4BL-1  | 40X57  | 1  | 5839 |
| 4LG-1  | 40X114 | 1  | 234  |
| 4LG-2  | 40X114 | 1  | 485  |
| 4LG-3  | 40X114 | 1  | 735  |
| 4LG-4  | 40X114 | 1  | 903  |
| 4LG-5  | 40X114 | 1  | 1237 |
| 4LG-6  | 40X114 | 1  | 1487 |
| 4LG-7  | 40X114 | 1  | 1738 |
| 4LG-8  | 40X114 | 1  | 1988 |
| 4LG-9  | 40X114 | 1  | 2239 |
| 4LG-10 | 40X114 | 1  | 2490 |
| 4LG-11 | 40X114 | 1  | 2740 |
| 4LG-12 | 40X114 | 1  | 2991 |
| 4LG-13 | 40X114 | 1  | 3242 |
| 4LG-14 | 40X114 | 1  | 3492 |
| 4LG-15 | 40X114 | 1  | 3688 |
| 4LG-16 | 40X114 | 1  | 3994 |
| 4LG-17 | 40X114 | 1  | 4244 |
| 4LG-18 | 40X114 | 1  | 4495 |
| 4LG-19 | 40X114 | 1  | 4660 |
| 4LG-20 | 40X114 | 1  | 4996 |
| 4LG-21 | 40X114 | 1  | 5247 |
| 4LG-22 | 40X114 | 1  | 5497 |
| 4LG-23 | 40X114 | 1  | 5748 |
| 4LG-24 | 40X114 | 1  | 5839 |
| 4LG-25 | 40X114 | 21 | 5839 |





# Rivercrest 40 (564x564)

## List of all items 4

### Log profiles

| Profile | Profile   |
|---------|---|
| 40X57   |    |
| 40X57   |    |
| 40X114  |   |
| 40X114  |  |
| 40X143  |  |

### Fence schedule

| Mark | Type             | Profile  | Count | Length |
|------|------------------|--|-------|--------|
| FN1  | Fence<br>40X40   |  | 48    | 900    |
| FN2  | Fence3<br>40X120 |  | 1     | 3663   |
| FN3  | Fence3<br>40X120 |  | 2     | 1600   |
| FN4  | Fence4<br>40X70  |  | 4     | 1600   |
| FN5  | Fence4<br>40X70  |  | 2     | 3663   |